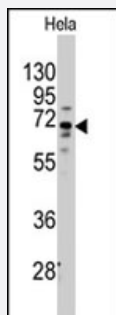


FZD1 polyclonal antibody

Catalog # PAB2603

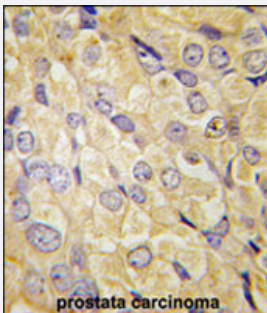
Size 400 uL

Applications



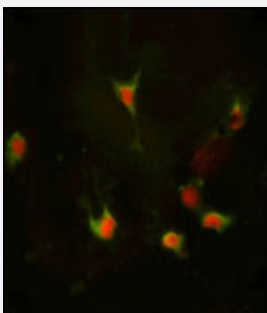
Western Blot (Cell lysate)

Western blot analysis of FZD1 polyclonal antibody (Cat # PAB2603) in HeLa cell line lysates (35 ug/lane). FZD1 (arrow) was detected using the purified polyclonal antibody.



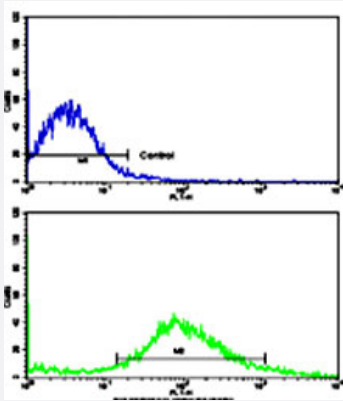
Immunohistochemistry (Formalin/PFA-fixed paraffin-embedded sections)

Formalin-fixed and paraffin-embedded human prostate carcinoma tissue reacted with FZD1 polyclonal antibody (Cat # PAB2603), which was peroxidase-conjugated to the secondary antibody, followed by DAB staining. This data demonstrates the use of this antibody for immunohistochemistry; clinical relevance has not been evaluated.



Immunofluorescence

Immunofluorescence analysis of FZD1 polyclonal antibody (Cat # PAB2603) in HeLa cells. Primary antibody was followed by Alexa-Fluor-546-conjugated donkey anti-rabbit IgG (H+L). Alexa-Fluor-546 emits orange fluorescence. Blue counterstaining is DAPI.



Flow Cytometry

Flow cytometric analysis of NCI-H292 cells using FZD1 polyclonal antibody (Cat # PAB2603)(bottom histogram) compared to a negative control cell (top histogram).

FITC-conjugated goat-anti-rabbit secondary antibodies were used for the analysis.

Specification

Product Description	Rabbit polyclonal antibody raised against synthetic peptide of FZD1.
Immunogen	A synthetic peptide (conjugated with KLH) corresponding to internal region of human FZD1.
Host	Rabbit
Reactivity	Human
Form	Liquid
Purification	Ammonium sulfate precipitation
Recommend Usage	Western Blot (1:1000) Immunohistochemistry (1:10-50) Immunofluorescence (1:10-50) Flow cytometry (1:10-50) The optimal working dilution should be determined by the end user.
Storage Buffer	In PBS (0.09% sodium azide)
Storage Instruction	Store at 4°C. For long term storage store at -20°C. Aliquot to avoid repeated freezing and thawing.
Note	This product contains sodium azide: a POISONOUS AND HAZARDOUS SUBSTANCE which should be handled by trained staff only.

Applications

- Western Blot (Cell lysate)

Western blot analysis of FZD1 polyclonal antibody (Cat # PAB2603) in HeLa cell line lysates (35 ug/lane).FZD1 (arrow) was detected using the purified polyclonal antibody.

- Immunohistochemistry (Formalin/PFA-fixed paraffin-embedded sections)

Formalin-fixed and paraffin-embedded human prostate carcinoma tissue reacted with FZD1 polyclonal antibody (Cat # PAB2603) , which was peroxidase-conjugated to the secondary antibody, followed by DAB staining. This data demonstrates the use of this antibody for immunohistochemistry ; clinical relevance has not been evaluated.

- Immunofluorescence

Immunofluorescence analysis of FZD1 polyclonal antibody (Cat # PAB2603) in HeLa cells. Primary antibody was followed by Alexa-Fluor-546-conjugated donkey anti-rabbit IgG (H+L). Alexa-Fluor-546 emits orange fluorescence. Blue counterstaining is DAPI.

- Flow Cytometry

Flow cytometric analysis of NCI-H292 cells using FZD1 polyclonal antibody (Cat # PAB2603)(bottom histogram) compared to a negative control cell (top histogram).

FITC-conjugated goat-anti-rabbit secondary antibodies were used for the analysis.

Gene Info — FZD1

Entrez GeneID	8321
Protein Accession#	NP_003496:Q9UP38
Gene Name	FZD1
Gene Alias	DKFZp564G072
Gene Description	frizzled homolog 1 (Drosophila)
Omim ID	603408
Gene Ontology	Hyperlink
Gene Summary	Members of the 'frizzled' gene family encode 7-transmembrane domain proteins that are receptors for Wnt signaling proteins. The FZD1 protein contains a signal peptide, a cysteine-rich domain in the N-terminal extracellular region, 7 transmembrane domains, and a C-terminal PDZ domain-binding motif. The FZD1 transcript is expressed in various tissues. [provided by RefSeq]
Other Designations	Wnt receptor frizzled 1 frizzled, Drosophila, homolog of, 1

Publication Reference

- [A cryptic frizzled module in cell surface collagen 18 inhibits Wnt/beta-catenin signaling.](#)

Quelard D, Lavergne E, Hendaoui I, Elamaa H, Tirola U, Heljasvaara R, Pihlajaniemi T, Clement B, Musso O.
PLoS One 2008 Apr; 3(4):e1878.

- [Genomic profile of matrix and vasculature remodeling in TGF-alpha induced pulmonary fibrosis.](#)

Hardie WD, Korfhagen TR, Sartor MA, Prestridge A, Medvedovic M, Le Cras TD, Ikegami M, Wesselkamper SC, Davidson C, Dietsch M, Nichols W, Whitsett JA, Leikauf GD.
American Journal of Respiratory Cell and Molecular Biology 2007 Sep; 37(3):309.

- [Bone morphogenetic protein-2 modulates Wnt and frizzled expression and enhances the canonical pathway of Wnt signaling in normal keratinocytes.](#)

Yang L, Yamasaki K, Shirakata Y, Dai X, Tokumaru S, Yahata Y, Tohyama M, Hanakawa Y, Sayama K, Hashimoto K.
Journal of Dermatological Science 2006 May; 42(2):111.

Pathway

- [Basal cell carcinoma](#)
- [Colorectal cancer](#)
- [Melanogenesis](#)
- [Pathways in cancer](#)
- [Wnt signaling pathway](#)

Disease

- [Cleft Lip](#)
- [Cleft Palate](#)