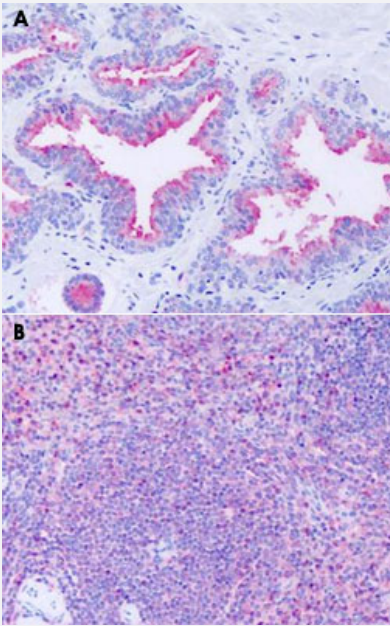


# GPR63 polyclonal antibody

Catalog # PAB26029

Size 50 ug

## Applications



### Immunohistochemistry (Formalin/PFA-fixed paraffin-embedded sections)

Immunohistochemical staining of formalin-fixed paraffin-embedded human prostate (A) and human spleen (B) with GPR63 polyclonal antibody (Cat # PAB26029).

## Specification

|                            |   |
|----------------------------|---|
| <b>Product Description</b> | Rabbit polyclonal antibody raised against synthetic peptide of GPR63.                       |
| <b>Immunogen</b>           | A synthetic peptide corresponding to 13 amino acids at extracellular domain of human GPR63. |
| <b>Host</b>                | Rabbit  |
| <b>Reactivity</b>          | Bovine, Horse, Human, Mouse, Rat  |
| <b>Specificity</b>         | BLAST analysis of the peptide immunogen showed no homology with other human proteins.       |
| <b>Form</b>                | Liquid  |
| <b>Purification</b>        | Immunoaffinity chromatography   |

|                            |   |
|----------------------------|---|
| <b>Recommend Usage</b>     | Immunohistochemistry (Formalin/PFA-fixed paraffin-embedded sections) (6-11 ug/mL)<br>The optimal working dilution should be determined by the end user. |
| <b>Storage Buffer</b>      | In PBS (0.09% sodium azide)   |
| <b>Storage Instruction</b> | Store at 4°C. For long term storage store at -80°C.<br>Aliquot to avoid repeated freezing and thawing.  |
| <b>Note</b>                | This product contains sodium azide: a POISONOUS AND HAZARDOUS SUBSTANCE which should be handled by trained staff only.                                  |

## Applications

- Immunohistochemistry (Formalin/PFA-fixed paraffin-embedded sections)

Immunohistochemical staining of formalin-fixed paraffin-embedded human prostate (A) and human spleen (B) with GPR63 polyclonal antibody (Cat # PAB26029).

## Gene Info — GPR63

|                           |   |
|---------------------------|---|
| <b>Entrez GeneID</b>      | <a href="#">81491</a>   |
| <b>Protein Accession#</b> | <a href="#">Q9BZJ6</a>  |
| <b>Gene Name</b>          | GPR63   |
| <b>Gene Alias</b>         | PSP24(beta), PSP24B   |
| <b>Gene Description</b>   | G protein-coupled receptor 63   |
| <b>Omim ID</b>            | <a href="#">606915</a>  |
| <b>Gene Ontology</b>      | <a href="#">Hyperlink</a>   |
| <b>Gene Summary</b>       | G protein-coupled receptors (GPCRs, or GPRs) contain 7 transmembrane domains and transduce extracellular signals through heterotrimeric G proteins.[supplied by OMIM] |
| <b>Other Designations</b> | OTTHUMP00000016881 brain expressed G-protein-coupled receptor PSP24 beta  |