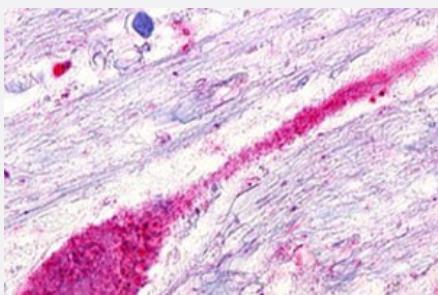


GPR173 polyclonal antibody

Catalog # PAB26023

Size 50 ug

Applications



Immunohistochemistry (Formalin/PFA-fixed paraffin-embedded sections)

Immunohistochemical staining of human brain, neuron with GPR173 polyclonal antibody (Cat # PAB26023).

Immunohistochemistry of formalin-fixed, paraffin-embedded tissue after heat-induced antigen retrieval.

Specification

Product Description	Rabbit polyclonal antibody raised against synthetic peptide of GPR173.
Immunogen	A synthetic peptide corresponding to 19 amino acids at transmembrane domain of human GPR173.
Host	Rabbit
Reactivity	Bovine, Dog, Hamster, Human, Monkey, Mouse, Rabbit, Rat
Specificity	BLAST analysis of the peptide immunogen showed no homology with other human proteins.
Form	Liquid
Purification	Immunoaffinity chromatography
Recommend Usage	Immunohistochemistry (Formalin/PFA-fixed paraffin-embedded sections) (2 ug/mL) The optimal working dilution should be determined by the end user.
Storage Buffer	In PBS (0.09% sodium azide)
Storage Instruction	Store at 4°C. For long term storage store at -80°C. Aliquot to avoid repeated freezing and thawing.

Note

This product contains sodium azide: a POISONOUS AND HAZARDOUS SUBSTANCE which should be handled by trained staff only.

Applications

- Immunohistochemistry (Formalin/PFA-fixed paraffin-embedded sections)

Immunohistochemical staining of human brain, neuron with GPR173 polyclonal antibody (Cat # PAB26023).

Immunohistochemistry of formalin-fixed, paraffin-embedded tissue after heat-induced antigen retrieval.

Gene Info — GPR173

Entrez GeneID	54328
Protein Accession#	Q9NS66
Gene Name	GPR173
Gene Alias	SREB3
Gene Description	G protein-coupled receptor 173
Omim ID	300253
Gene Ontology	Hyperlink
Other Designations	G protein coupled receptor 173 G-protein coupled receptor 173 OTTHUMP00000023334 super conserved receptor expressed in brain 3