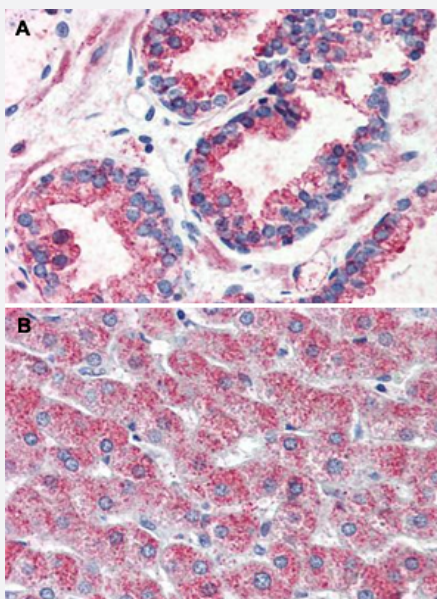


GPR126 polyclonal antibody

Catalog # PAB26018

Size 50 ug

Applications



Immunohistochemistry (Formalin/PFA-fixed paraffin-embedded sections)

Immunohistochemical staining of human prostate (A) and human liver (B) with GPR126 polyclonal antibody (Cat # PAB26018).

Immunohistochemistry of formalin-fixed, paraffin-embedded tissue after heat-induced antigen retrieval.

Specification

Product Description	Rabbit polyclonal antibody raised against synthetic peptide of GPR126.
Immunogen	A synthetic peptide corresponding to 20 amino acids at N-terminus of human GPR126.
Host	Rabbit
Reactivity	Bovine, Human
Specificity	BLAST analysis of the peptide immunogen showed no homology with other human proteins, except GPR64 (50%).
Form	Liquid
Purification	Immunoaffinity chromatography

Recommend Usage	Immunohistochemistry (Formalin/PFA-fixed paraffin-embedded sections) (10 ug/mL) The optimal working dilution should be determined by the end user.
Storage Buffer	In PBS (0.09% sodium azide)
Storage Instruction	Store at 4°C. For long term storage store at -80°C. Aliquot to avoid repeated freezing and thawing.
Note	This product contains sodium azide: a POISONOUS AND HAZARDOUS SUBSTANCE which should be handled by trained staff only.

Applications

- Immunohistochemistry (Formalin/PFA-fixed paraffin-embedded sections)

Immunohistochemical staining of human prostate (A) and human liver (B) with GPR126 polyclonal antibody (Cat # PAB26018).
Immunohistochemistry of formalin-fixed, paraffin-embedded tissue after heat-induced antigen retrieval.

- Enzyme-linked Immunoabsorbent Assay

Gene Info — GPR126

Entrez GeneID	57211
Protein Accession#	Q86SQ4
Gene Name	GPR126
Gene Alias	APG1, DREG, PS1TP2, STQTL1, VIGR
Gene Description	G protein-coupled receptor 126
Gene Ontology	Hyperlink
Gene Summary	This gene, which is upregulated in human umbilical vein endothelial cells, encodes a G protein-coupled receptor. Variations in this gene can affect a person's stature. Multiple transcript variants encoding different proteins have been found for this gene. [provided by RefSeq]
Other Designations	HBV PreS1-transactivated protein 2 OTTHUMP00000040178 developmentally regulated G-protein-coupled receptor

Disease

- [Diabetes Mellitus](#)

- [Genetic Predisposition to Disease](#)
- [Lung Diseases](#)
- [Narcolepsy](#)
- [Tobacco Use Disorder](#)