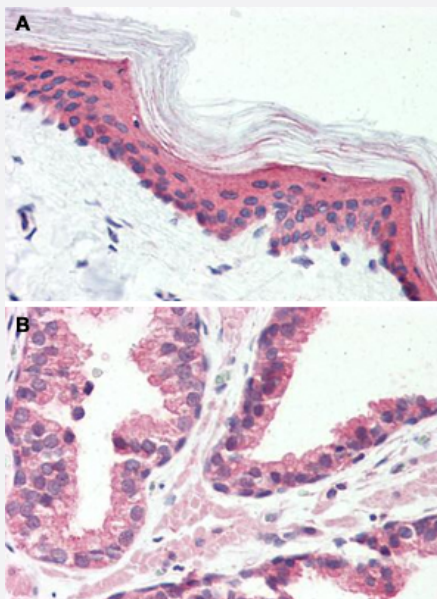


GPR126 polyclonal antibody

Catalog # PAB26017

Size 50 ug

Applications



Immunohistochemistry (Formalin/PFA-fixed paraffin-embedded sections)

Immunohistochemical staining of human skin (A) and human prostate (B) with GPR126 polyclonal antibody (Cat # PAB26017).

Immunohistochemistry of formalin-fixed, paraffin-embedded tissue after heat-induced antigen retrieval.

Specification

Product Description	Rabbit polyclonal antibody raised against synthetic peptide of GPR126.
Immunogen	A synthetic peptide corresponding to 18 amino acids at N-terminus of human GPR126.
Host	Rabbit
Reactivity	Bovine, Chicken, Dog, Hamster, Horse, Human, Monkey, Mouse, Rabbit, Rat
Specificity	BLAST analysis of the peptide immunogen showed no homology with other human proteins, except GPR64 (72%).
Form	Liquid
Purification	Immunoaffinity chromatography

Recommend Usage	Immunohistochemistry (Formalin/PFA-fixed paraffin-embedded sections) (10 ug/mL) The optimal working dilution should be determined by the end user.
Storage Buffer	In PBS (0.09% sodium azide)
Storage Instruction	Store at 4°C. For long term storage store at -80°C. Aliquot to avoid repeated freezing and thawing.
Note	This product contains sodium azide: a POISONOUS AND HAZARDOUS SUBSTANCE which should be handled by trained staff only.

Applications

- Immunohistochemistry (Formalin/PFA-fixed paraffin-embedded sections)

Immunohistochemical staining of human skin (A) and human prostate (B) with GPR126 polyclonal antibody (Cat # PAB26017).
Immunohistochemistry of formalin-fixed, paraffin-embedded tissue after heat-induced antigen retrieval.

Gene Info — GPR126

Entrez GeneID	57211
Protein Accession#	Q86SQ4
Gene Name	GPR126
Gene Alias	APG1, DREG, PS1TP2, STQTL1, VIGR
Gene Description	G protein-coupled receptor 126
Gene Ontology	Hyperlink
Gene Summary	This gene, which is upregulated in human umbilical vein endothelial cells, encodes a G protein-coupled receptor. Variations in this gene can affect a person's stature. Multiple transcript variants encoding different proteins have been found for this gene. [provided by RefSeq]
Other Designations	HBV PreS1-transactivated protein 2[OTTHUMP00000040178]developmentally regulated G-protein-coupled receptor

Disease

- [Diabetes Mellitus](#)
- [Genetic Predisposition to Disease](#)

- [Lung Diseases](#)
- [Narcolepsy](#)
- [Tobacco Use Disorder](#)