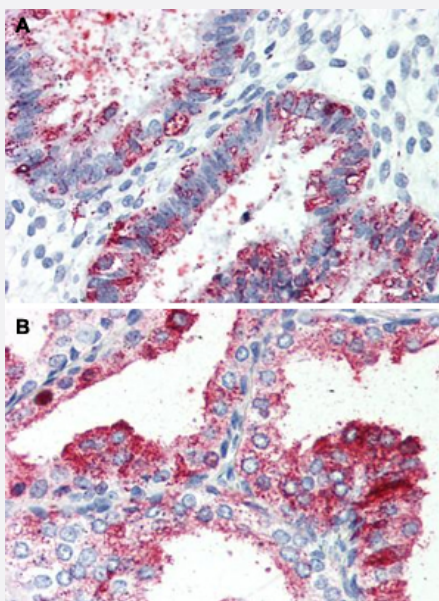


GPR27 polyclonal antibody

Catalog # PAB26001

Size 50 ug

Applications



Immunohistochemistry (Formalin/PFA-fixed paraffin-embedded sections)

Immunohistochemical staining of human uterus (A) and human prostate (B) with GPR27 polyclonal antibody (Cat # PAB26001).

Immunohistochemistry of formalin-fixed, paraffin-embedded tissue after heat-induced antigen retrieval.

Specification

Product Description	Rabbit polyclonal antibody raised against synthetic peptide of GPR27.
Immunogen	A synthetic peptide corresponding to 19 amino acids at cytoplasmic domain of human GPR27.
Host	Rabbit
Reactivity	Human, Mouse, Rat
Specificity	BLAST analysis of the peptide immunogen showed no homology with other human proteins.
Form	Liquid
Purification	Immunoaffinity chromatography
Recommend Usage	Immunohistochemistry (Formalin/PFA-fixed paraffin-embedded sections) (5 ug/mL) The optimal working dilution should be determined by the end user.

Storage Buffer	In PBS (0.09% sodium azide)
Storage Instruction	Store at 4°C. For long term storage store at -80°C. Aliquot to avoid repeated freezing and thawing.
Note	This product contains sodium azide: a POISONOUS AND HAZARDOUS SUBSTANCE which should be handled by trained staff only.

Applications

- Immunohistochemistry (Formalin/PFA-fixed paraffin-embedded sections)

Immunohistochemical staining of human uterus (A) and human prostate (B) with GPR27 polyclonal antibody (Cat # PAB26001).
Immunohistochemistry of formalin-fixed, paraffin-embedded tissue after heat-induced antigen retrieval.

Gene Info — GPR27

Entrez GeneID	2850
Protein Accession#	Q9NS67
Gene Name	GPR27
Gene Alias	SREB1
Gene Description	G protein-coupled receptor 27
Omim ID	605187
Gene Ontology	Hyperlink
Other Designations	super conserved receptor expressed in brain 1