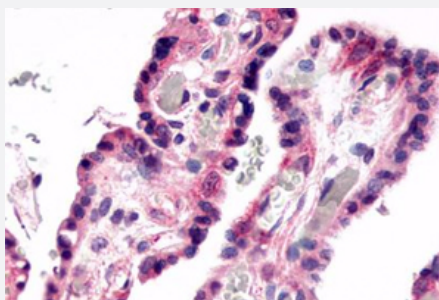


# GPR78 polyclonal antibody

Catalog # PAB25997

Size 50 ug

## Applications



### Immunohistochemistry (Formalin/PFA-fixed paraffin-embedded sections)

Immunohistochemical staining of human placenta, villi with GPR78 polyclonal antibody (Cat # PAB25997).

Immunohistochemistry of formalin-fixed, paraffin-embedded tissue after heat-induced antigen retrieval.

## Specification

<b>Product Description</b>	Rabbit polyclonal antibody raised against synthetic peptide of GPR78.
<b>Immunogen</b>	A synthetic peptide corresponding to 19 amino acids at C-terminus of human GPR78.
<b>Host</b>	Rabbit
<b>Reactivity</b>	Human
<b>Specificity</b>	BLAST analysis of the peptide immunogen showed no homology with other human proteins.
<b>Form</b>	Liquid
<b>Purification</b>	Immunoaffinity chromatography
<b>Recommend Usage</b>	Immunohistochemistry (Formalin/PFA-fixed paraffin-embedded sections) (3-6 ug/mL) The optimal working dilution should be determined by the end user.
<b>Storage Buffer</b>	In PBS (0.09% sodium azide)
<b>Storage Instruction</b>	Store at 4°C. For long term storage store at -80°C. Aliquot to avoid repeated freezing and thawing.

**Note**

This product contains sodium azide: a POISONOUS AND HAZARDOUS SUBSTANCE which should be handled by trained staff only.

## Applications

- Immunohistochemistry (Formalin/PFA-fixed paraffin-embedded sections)

Immunohistochemical staining of human placenta, villi with GPR78 polyclonal antibody (Cat # PAB25997).

Immunohistochemistry of formalin-fixed, paraffin-embedded tissue after heat-induced antigen retrieval.

## Gene Info — GPR78

**Entrez GeneID** [27201](#)

**Protein Accession#** [Q96P69](#)

**Gene Name** GPR78

**Gene Alias** -

**Gene Description** G protein-coupled receptor 78

**Omim ID** [606921](#)

**Gene Ontology** [Hyperlink](#)

**Gene Summary** G protein-coupled receptors (GPCRs, or GPRs) contain 7 transmembrane domains and transduce extracellular signals through heterotrimeric G proteins.[supplied by OMIM]

**Other Designations** OTTHUMP00000158597

## Disease

- [Bipolar Disorder](#)
- [Genetic Predisposition to Disease](#)
- [Hepatitis B](#)
- [Schizophrenia](#)