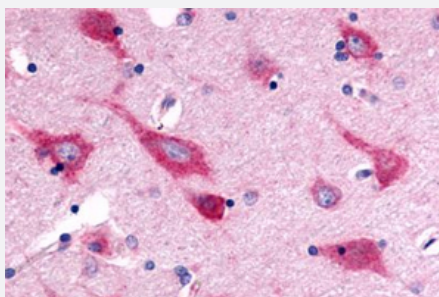


# GPR126 polyclonal antibody

Catalog # PAB25979

Size 50 ug

## Applications



### Immunohistochemistry (Formalin/PFA-fixed paraffin-embedded sections)

Immunohistochemical staining of human brain, neurons and glia with GPR126 polyclonal antibody (Cat # PAB25979).

Immunohistochemistry of formalin-fixed, paraffin-embedded tissue after heat-induced antigen retrieval.

## Specification

<b>Product Description</b>	Rabbit polyclonal antibody raised against synthetic peptide of GPR126.
<b>Immunogen</b>	A synthetic peptide corresponding to 16 amino acids at C-terminus of human GPR126.
<b>Host</b>	Rabbit
<b>Reactivity</b>	Human
<b>Specificity</b>	BLAST analysis of the peptide immunogen showed no homology with other human proteins.
<b>Form</b>	Liquid
<b>Purification</b>	Immunoaffinity chromatography
<b>Recommend Usage</b>	Immunohistochemistry (Formalin/PFA-fixed paraffin-embedded sections) (3-5 ug/mL) The optimal working dilution should be determined by the end user.
<b>Storage Buffer</b>	In PBS (0.09% sodium azide)
<b>Storage Instruction</b>	Store at 4°C. For long term storage store at -80°C. Aliquot to avoid repeated freezing and thawing.

**Note**

This product contains sodium azide: a POISONOUS AND HAZARDOUS SUBSTANCE which should be handled by trained staff only.

## Applications

- Immunohistochemistry (Formalin/PFA-fixed paraffin-embedded sections)

Immunohistochemical staining of human brain, neurons and glia with GPR126 polyclonal antibody (Cat # PAB25979).

Immunohistochemistry of formalin-fixed, paraffin-embedded tissue after heat-induced antigen retrieval.

## Gene Info — GPR126

**Entrez GeneID** [57211](#)

**Protein Accession#** [Q86SQ4](#)

**Gene Name** GPR126

**Gene Alias** APG1, DREG, PS1TP2, STQTL1, VIGR

**Gene Description** G protein-coupled receptor 126

**Gene Ontology** [Hyperlink](#)

**Gene Summary** This gene, which is upregulated in human umbilical vein endothelial cells, encodes a G protein-coupled receptor. Variations in this gene can affect a person's stature. Multiple transcript variants encoding different proteins have been found for this gene. [provided by RefSeq]

**Other Designations** HBV PreS1-transactivated protein 2|OTTHUMP00000040178|developmentally regulated G-protein-coupled receptor

## Disease

- [Diabetes Mellitus](#)
- [Genetic Predisposition to Disease](#)
- [Lung Diseases](#)
- [Narcolepsy](#)
- [Tobacco Use Disorder](#)