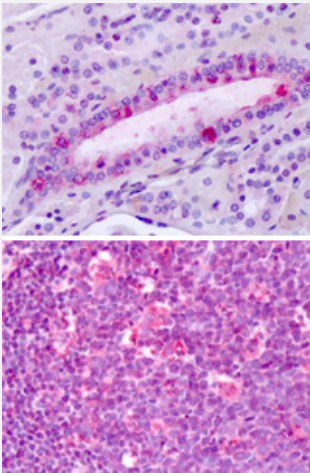


LPHN3 polyclonal antibody

Catalog # PAB25970

Size 50 ug

Applications



Immunohistochemistry (Formalin/PFA-fixed paraffin-embedded sections)

Immunohistochemical staining of formalin-fixed, paraffin-embedded human tonsil with LPHN3 polyclonal antibody (Cat # PAB25970).

Specification

Product Description	Rabbit polyclonal antibody raised against synthetic peptide of LPHN3.
Immunogen	A synthetic peptide corresponding to 16 amino acids at C-terminus of human LPHN3.
Host	Rabbit
Reactivity	Chicken, Hamster, Horse, Human, Monkey, Mouse, Rat
Specificity	BLAST analysis of the peptide immunogen showed no homology with other human proteins.
Form	Liquid
Purification	Immunoaffinity chromatography
Recommend Usage	Immunohistochemistry (Formalin/PFA-fixed paraffin-embedded sections) (4-6 ug/mL) The optimal working dilution should be determined by the end user.
Storage Buffer	In PBS (0.09% sodium azide)

Storage Instruction

Store at 4°C. For long term storage store at -80°C.
Aliquot to avoid repeated freezing and thawing.

Note

This product contains sodium azide: a POISONOUS AND HAZARDOUS SUBSTANCE which should be handled by trained staff only.

Applications

- Immunohistochemistry (Formalin/PFA-fixed paraffin-embedded sections)

Immunohistochemical staining of formalin-fixed, paraffin-embedded human tonsil with LPHN3 polyclonal antibody (Cat # PAB25970).

Gene Info — LPHN3

Entrez GeneID [23284](#)

Protein Accession# [Q9HAR2](#)

Gene Name LPHN3

Gene Alias C1RL3, LEC3

Gene Description latrophilin 3

Gene Ontology [Hyperlink](#)

Gene Summary This gene encodes a member of the latrophilin subfamily of G-protein coupled receptors (GPCR). Latrophilins may function in both cell adhesion and signal transduction. In experiments with non-human species, endogenous proteolytic cleavage within a cysteine-rich GPS (G-protein-coupled-receptor proteolysis site) domain resulted in two subunits (a large extracellular N-terminal cell adhesion subunit and a subunit with substantial similarity to the secretin/calcitonin family of GPCRs) being non-covalently bound at the cell membrane. [provided by RefSeq]

Other Designations calcium-independent alpha-latrotoxin receptor 3|latrophilin homolog 3 (cow)|lectomedin 3

Disease

- [Genetic Predisposition to Disease](#)
- [Narcolepsy](#)
- [Tobacco Use Disorder](#)