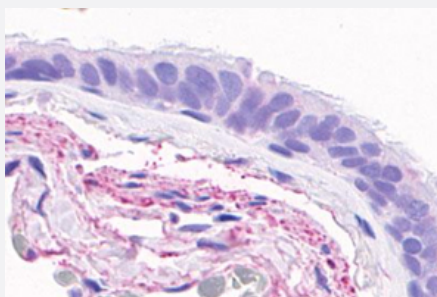


GPR4 polyclonal antibody

Catalog # PAB25965

Size 50 ug

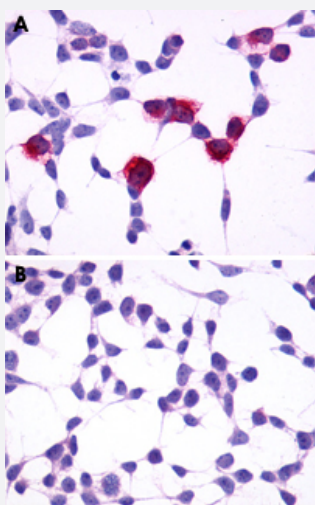
Applications



Immunohistochemistry (Formalin/PFA-fixed paraffin-embedded sections)

Immunohistochemical staining of human lung, respiratory epithelium with GPR4 polyclonal antibody (Cat # PAB25965).

Immunohistochemistry of formalin-fixed, paraffin-embedded tissue after heat-induced antigen retrieval.



Immunocytochemistry

Immunocytochemical staining of HEK293 human embryonic kidney cells transfected (A) and untransfected (B) with GPR4. Primary antibody using GPR4 polyclonal antibody (Cat # PAB25965).

Specification

Product Description	Rabbit polyclonal antibody raised against synthetic peptide of GPR4.
Immunogen	A synthetic peptide corresponding to 19 amino acids at C-terminus of human GPR4.
Host	Rabbit
Reactivity	Dog, Human, Monkey

Specificity	BLAST analysis of the peptide immunogen showed no homology with other human proteins.
Form	Liquid
Purification	Immunoaffinity chromatography
Recommend Usage	Immunohistochemistry (Formalin/PFA-fixed paraffin-embedded sections) (24 ug/mL) The optimal working dilution should be determined by the end user.
Storage Buffer	In PBS (0.09% sodium azide)
Storage Instruction	Store at 4°C. For long term storage store at -80°C. Aliquot to avoid repeated freezing and thawing.
Note	This product contains sodium azide: a POISONOUS AND HAZARDOUS SUBSTANCE which should be handled by trained staff only.

Applications

- Immunohistochemistry (Formalin/PFA-fixed paraffin-embedded sections)

Immunohistochemical staining of human lung, respiratory epithelium with GPR4 polyclonal antibody (Cat # PAB25965).
Immunohistochemistry of formalin-fixed, paraffin-embedded tissue after heat-induced antigen retrieval.

- Immunocytochemistry

Immunocytochemical staining of HEK293 human embryonic kidney cells transfected (A) and untransfected (B) with GPR4.
Primary antibody using GPR4 polyclonal antibody (Cat # PAB25965).

Gene Info — GPR4

Entrez GeneID	2828
Protein Accession#	P46093
Gene Name	GPR4
Gene Alias	-
Gene Description	G protein-coupled receptor 4
Omim ID	600551
Gene Ontology	Hyperlink
Other Designations	-