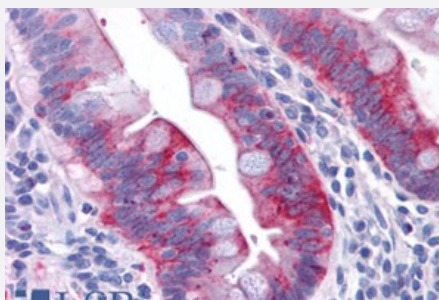


GPR31 polyclonal antibody

Catalog # PAB25954

Size 50 ug

Applications



Immunohistochemistry (Formalin/PFA-fixed paraffin-embedded sections)

Immunohistochemical staining of human small intestine, epithelium with GPR31 polyclonal antibody (Cat # PAB25954).

Immunohistochemistry of formalin-fixed, paraffin-embedded tissue after heat-induced antigen retrieval.

Specification

Product Description	Rabbit polyclonal antibody raised against synthetic peptide of GPR31.
Immunogen	A synthetic peptide corresponding to 19 amino acids at extracellular domain of human GPR31.
Host	Rabbit
Reactivity	Human
Specificity	BLAST analysis of the peptide immunogen showed no homology with other human proteins.
Form	Liquid
Purification	Immunoaffinity chromatography
Recommend Usage	Immunohistochemistry (Formalin/PFA-fixed paraffin-embedded sections) (2-4 ug/mL) The optimal working dilution should be determined by the end user.
Storage Buffer	In PBS (0.09% sodium azide)
Storage Instruction	Store at 4°C. For long term storage store at -80°C. Aliquot to avoid repeated freezing and thawing.

Note

This product contains sodium azide: a POISONOUS AND HAZARDOUS SUBSTANCE which should be handled by trained staff only.

Applications

- Immunohistochemistry (Formalin/PFA-fixed paraffin-embedded sections)

Immunohistochemical staining of human small intestine, epithelium with GPR31 polyclonal antibody (Cat # PAB25954).
Immunohistochemistry of formalin-fixed, paraffin-embedded tissue after heat-induced antigen retrieval.

Gene Info — GPR31

Entrez GeneID	2853
---------------	----------------------

Protein Accession#	O00270
--------------------	------------------------

Gene Name	GPR31
-----------	-------

Gene Alias	-
------------	---

Gene Description	G protein-coupled receptor 31
------------------	-------------------------------

Omim ID	602043
---------	------------------------

Gene Ontology	Hyperlink
---------------	---------------------------

Other Designations	OTTHUMP00000017616 bA517H2.2 (G protein-coupled receptor 31)
--------------------	--