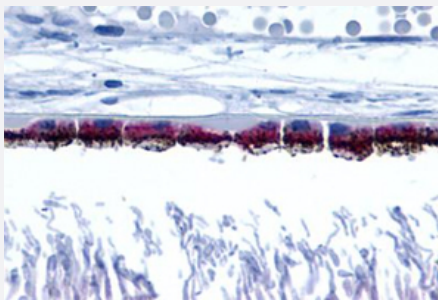


RRH polyclonal antibody

Catalog # PAB25953

Size 50 ug

Applications



Immunohistochemistry (Formalin/PFA-fixed paraffin-embedded sections)

Immunohistochemical staining of human eye, pigmented retinal epithelium with RRH polyclonal antibody (Cat # PAB25953).

Immunohistochemistry of formalin-fixed, paraffin-embedded tissue after heat-induced antigen retrieval.

Specification

Product Description	Rabbit polyclonal antibody raised against synthetic peptide of RRH.
Immunogen	A synthetic peptide corresponding to 17 amino acids at cytoplasmic domain of human RRH.
Host	Rabbit
Reactivity	Human
Specificity	BLAST analysis of the peptide immunogen showed no homology with other human proteins.
Form	Liquid
Purification	Immunoaffinity chromatography
Recommend Usage	Immunohistochemistry (Formalin/PFA-fixed paraffin-embedded sections) (3-4 ug/mL) The optimal working dilution should be determined by the end user.
Storage Buffer	In PBS (0.09% sodium azide)
Storage Instruction	Store at 4°C. For long term storage store at -80°C. Aliquot to avoid repeated freezing and thawing.

Note

This product contains sodium azide: a POISONOUS AND HAZARDOUS SUBSTANCE which should be handled by trained staff only.

Applications

- Immunohistochemistry (Formalin/PFA-fixed paraffin-embedded sections)

Immunohistochemical staining of human eye, pigmented retinal epithelium with RRH polyclonal antibody (Cat # PAB25953).
Immunohistochemistry of formalin-fixed, paraffin-embedded tissue after heat-induced antigen retrieval.

Gene Info — RRH

Entrez GeneID [10692](#)

Protein Accession# [O14718](#)

Gene Name RRH

Gene Alias -

Gene Description retinal pigment epithelium-derived rhodopsin homolog

Omim ID [605224](#)

Gene Ontology [Hyperlink](#)

Gene Summary Opsins are members of the guanine nucleotide-binding protein (G protein)-coupled receptor superfamily. This gene belongs to the seven-exon subfamily of mammalian opsin genes that includes opsin 5 and retinal G protein coupled receptor. [provided by RefSeq]

Other Designations peropsin|visual pigment-like receptor peropsin

Disease

- [Alcoholism](#)
- [Genetic Predisposition to Disease](#)