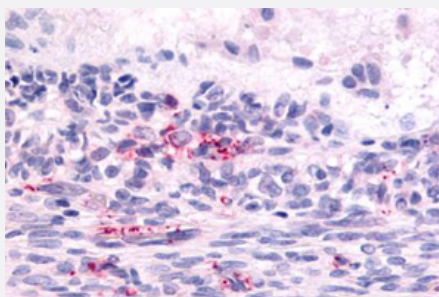


LPHN2 polyclonal antibody

Catalog # PAB25950

Size 50 ug

Applications



Immunohistochemistry (Formalin/PFA-fixed paraffin-embedded sections)

Immunohistochemical staining of human ovary, graafian follicle with LPHN2 polyclonal antibody (Cat # PAB25950).

Immunohistochemistry of formalin-fixed, paraffin-embedded tissue after heat-induced antigen retrieval.

Specification

Product Description	Rabbit polyclonal antibody raised against synthetic peptide of LPHN2.
Immunogen	A synthetic peptide corresponding to 16 amino acids at N-terminus of human LPHN2.
Host	Rabbit
Reactivity	Bovine, Dog, Horse, Human, Mouse, Pig, Rabbit, Rat
Specificity	BLAST analysis of the peptide immunogen showed no homology with other human proteins.
Form	Liquid
Purification	Immunoaffinity chromatography
Recommend Usage	Immunohistochemistry (Formalin/PFA-fixed paraffin-embedded sections) (7 ug/mL) The optimal working dilution should be determined by the end user.
Storage Buffer	In PBS (0.09% sodium azide)
Storage Instruction	Store at 4°C. For long term storage store at -80°C. Aliquot to avoid repeated freezing and thawing.

Note

This product contains sodium azide: a POISONOUS AND HAZARDOUS SUBSTANCE which should be handled by trained staff only.

Applications

- Immunohistochemistry (Formalin/PFA-fixed paraffin-embedded sections)

Immunohistochemical staining of human ovary, graafian follicle with LPHN2 polyclonal antibody (Cat # PAB25950).

Immunohistochemistry of formalin-fixed, paraffin-embedded tissue after heat-induced antigen retrieval.

Gene Info — LPHN2

Entrez GeneID [23266](#)

Protein Accession# [O95490](#)

Gene Name LPHN2

Gene Alias C1RL2, CL2, LEC1, LPHH1

Gene Description latrophilin 2

Omim ID [607018](#)

Gene Ontology [Hyperlink](#)

Gene Summary This gene encodes a member of the latrophilin subfamily of G-protein coupled receptors (GPCR). Latrophilins may function in both cell adhesion and signal transduction. In experiments with non-human species, endogenous proteolytic cleavage within a cysteine-rich GPS (G-protein-coupled-receptor proteolysis site) domain resulted in two subunits (a large extracellular N-terminal cell adhesion subunit and a subunit with substantial similarity to the secretin/calcitonin family of GPCRs) being non-covalently bound at the cell membrane. While several transcript variants have been described, the biological validity of only one has been determined. [provided by RefSeq]

Other Designations OTTHUMP00000011441|OTTHUMP00000011444|calcium-independent alpha-latrotoxin receptor 2|latrophilin 1|latrophilin homolog 1|latrophilin homolog 2 (cow)|lectomedin-1