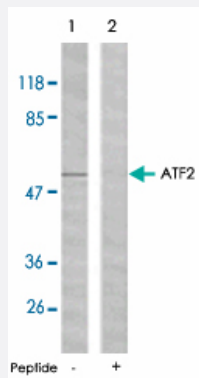


# ATF2 polyclonal antibody

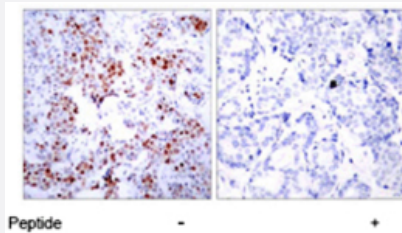
Catalog # PAB25944      Size 100 ug

## Applications



### Western Blot (Cell lysate)

Western blot analysis of extracts from HeLa cells using ATF2 polyclonal antibody (Cat # PAB25944).



### Immunohistochemistry (Formalin/PFA-fixed paraffin-embedded sections)

Immunohistochemical analysis of paraffin-embedded human breast carcinoma tissue using ATF2 polyclonal antibody (Cat # PAB25944).

## Specification

<b>Product Description</b>	Rabbit polyclonal antibody raised against synthetic peptide of ATF2.
<b>Immunogen</b>	A synthetic peptide corresponding to residues surrounding S62/S44 of human ATF2.
<b>Sequence</b>	N-D-Sp-V-I
<b>Host</b>	Rabbit
<b>Reactivity</b>	Human, Mouse, Rat
<b>Form</b>	Liquid

Purification	Affinity chromatography
Concentration	1 mg/mL
Recommend Usage	Immunohistochemistry (1:50-1:100) Western Blot (1:500-1:1000) Immunofluorescence (1:100-1:200) The optimal working dilution should be determined by the end user.
Storage Buffer	In PBS, 150 mM NaCl, pH 7.4 (50% glycerol, 0.02% sodium azide)
Storage Instruction	Store at -20°C. Aliquot to avoid repeated freezing and thawing.
Note	This product contains sodium azide: a POISONOUS AND HAZARDOUS SUBSTANCE which should be handled by trained staff only.

## Applications

- Western Blot (Cell lysate)

Western blot analysis of extracts from HeLa cells using ATF2 polyclonal antibody (Cat # PAB25944).

- Immunohistochemistry (Formalin/PFA-fixed paraffin-embedded sections)

Immunohistochemical analysis of paraffin-embedded human breast carcinoma tissue using ATF2 polyclonal antibody (Cat # PAB25944).

- Immunofluorescence

## Gene Info — ATF2

Entrez GeneID	<a href="#">1386</a>
Protein Accession#	<a href="#">P15336</a>
Gene Name	ATF2
Gene Alias	CRE-BP1, CREB2, HB16, MGC111558, TREB7
Gene Description	activating transcription factor 2
Omim ID	<a href="#">123811</a>
Gene Ontology	<a href="#">Hyperlink</a>

**Gene Summary**

This gene encodes a transcription factor that is a member of the leucine zipper family of DNA binding proteins. This protein binds to the cAMP-responsive element (CRE), an octameric palindrome. The protein forms a homodimer or heterodimer with c-Jun and stimulates CRE-dependent transcription. The protein is also a histone acetyltransferase (HAT) that specifically acetylates histones H2B and H4 in vitro; thus it may represent a class of sequence-specific factors that activate transcription by direct effects on chromatin components. Additional transcript variants have been identified but their biological validity has not been determined. [provided by RefSeq]

**Other Designations**

OTTHUMP00000163262|activating transcription factor 2 splice variant ATF2-var2|cAMP responsive element binding protein 2, formerly

**Pathway**

- [MAPK signaling pathway](#)

**Disease**

- [Bipolar Disorder](#)
- [Cardiovascular Diseases](#)
- [Diabetes Mellitus](#)
- [Edema](#)
- [Genetic Predisposition to Disease](#)
- [Schizophrenia](#)
- [Tobacco Use Disorder](#)