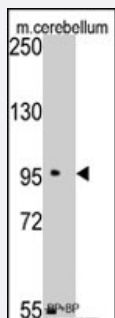


SEMA6A polyclonal antibody

Catalog # PAB2588

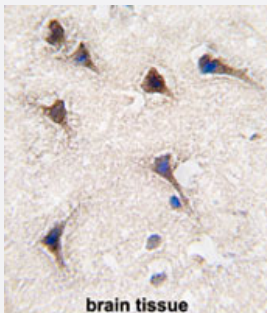
Size 400 uL

Applications



Western Blot (Tissue lysate)

Western blot analysis of SEMA6A polyclonal antibody (Cat # PAB2588) pre-incubated with (right lane) and without (left lane) blocking peptide in mouse cerebellum tissue lysate. SEMA6A (arrow) was detected using the purified polyclonal antibody.



Immunohistochemistry (Formalin/PFA-fixed paraffin-embedded sections)

Formalin-fixed and paraffin-embedded human brain reacted with SEMA6A polyclonal antibody (Cat # PAB2588), which was peroxidase-conjugated to the secondary antibody, followed by AEC staining.

This data demonstrates the use of this antibody for immunohistochemistry; clinical relevance has not been evaluated.

Specification

Product Description	Rabbit polyclonal antibody raised against synthetic peptide of SEMA6A.
Immunogen	A synthetic peptide (conjugated with KLH) corresponding to C-terminus of human SEMA6A.
Host	Rabbit
Reactivity	Human
Form	Liquid
Purification	Ammonium sulfate precipitation

Recommend Usage	Western Blot (1:1000) Immunohistochemistry (1:10-50) The optimal working dilution should be determined by the end user.
Storage Buffer	In PBS (0.09% sodium azide)
Storage Instruction	Store at 4°C. For long term storage store at -20°C. Aliquot to avoid repeated freezing and thawing.
Note	This product contains sodium azide: a POISONOUS AND HAZARDOUS SUBSTANCE which should be handled by trained staff only.

Applications

- Western Blot (Tissue lysate)

Western blot analysis of SEMA6A polyclonal antibody (Cat # PAB2588) pre-incubated with (right lane) and without (left lane) blocking peptide in mouse cerebellum tissue lysate. SEMA6A (arrow) was detected using the purified polyclonal antibody.

- Immunohistochemistry (Formalin/PFA-fixed paraffin-embedded sections)

Formalin-fixed and paraffin-embedded human brain reacted with SEMA6A polyclonal antibody (Cat # PAB2588), which was peroxidase-conjugated to the secondary antibody, followed by AEC staining.

This data demonstrates the use of this antibody for immunohistochemistry; clinical relevance has not been evaluated.

Gene Info — SEMA6A

Entrez GeneID	57556
Protein Accession#	NP_065847;Q9H2E6
Gene Name	SEMA6A
Gene Alias	HT018, KIAA1368, SEMA, SEMA6A1, SEMAQ, VIA
Gene Description	sema domain, transmembrane domain (TM), and cytoplasmic domain, (semaphorin) 6A
Omim ID	605885
Gene Ontology	Hyperlink
Gene Summary	sema domain
Other Designations	sema VIa semaphorin 6A-1

Publication Reference

- [From plasma membrane to cytoskeleton: a novel function for semaphorin 6A.](#)

Prislei S, Mozzetti S, Filippetti F, De Donato M, Raspaglio G, Cicchillitti L, Scambia G, Ferlini C.

Molecular Cancer Therapeutics 2008 Jan; 7(1):233.

Application: WB-Ce, Human, A2780 cells

- [Comparative integromics on non-canonical WNT or planar cell polarity signaling molecules: transcriptional mechanism of PTK7 in colorectal cancer and that of SEMA6A in undifferentiated ES cells.](#)

Katoh M, Katoh M.

International Journal of Molecular Medicine 2007 Sep; 20(3):405.

- [The class 6 semaphorin SEMA6A is induced by interferon-gamma and defines an activation status of langerhans cells observed in pathological situations.](#)

Gautier G, de Saint-Vis B, Senechal B, Pin JJ, Bates EE, Caux C, Geissmann F, Garrone P.

The American Journal of Pathology 2006 Feb; 168(2):453.

Application: IHC-Fr, Flow Cyt, Human, Human dendritic cells, Human skin

Pathway

- [Axon guidance](#)

Disease

- [Hypertension](#)
- [Pre-Eclampsia](#)
- [Pregnancy Complications](#)
- [Tobacco Use Disorder](#)