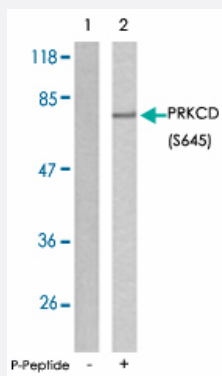


PRKCD (phospho S645) polyclonal antibody

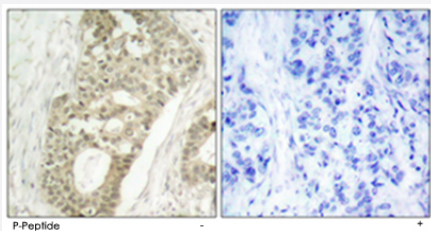
Catalog # PAB25874 Size 100 ug

Applications



Western Blot (Cell lysate)

Western blot analysis of extracts from MCF7 using PRKCD (phospho S645) polyclonal antibody (Cat # PAB25874).



Immunohistochemistry (Formalin/PFA-fixed paraffin-embedded sections)

Immunohistochemical analysis of paraffin-embedded human breast carcinoma tissue using PRKCD (phospho S645) polyclonal antibody (Cat # PAB25874).

Specification

Product Description	Rabbit polyclonal antibody raised against synthetic phosphopeptide of PRKCD.
Immunogen	Synthetic phosphopeptide corresponding to residues surrounding S645 of human PRKCD.
Sequence	R-L-Sp-Y-S
Host	Rabbit
Theoretical MW (kDa)	78
Reactivity	Human, Mouse, Rat

Form	Liquid
Purification	Affinity chromatography
Concentration	1 mg/mL
Recommend Usage	Immunohistochemistry (1:50-1:100) Western Blot (1:500-1:1000) The optimal working dilution should be determined by the end user.
Storage Buffer	In PBS (without Mg ²⁺ and Ca ²⁺), 150 mM NaCl, pH 7.4 (50% glycerol, 0.02% sodium azide)
Storage Instruction	Store at -20°C. Aliquot to avoid repeated freezing and thawing.
Note	This product contains sodium azide: a POISONOUS AND HAZARDOUS SUBSTANCE which should be handled by trained staff only.

Applications

- Western Blot (Cell lysate)

Western blot analysis of extracts from MCF7 using PRKCD (phospho S645) polyclonal antibody (Cat # PAB25874).

- Immunohistochemistry (Formalin/PFA-fixed paraffin-embedded sections)

Immunohistochemical analysis of paraffin-embedded human breast carcinoma tissue using PRKCD (phospho S645) polyclonal antibody (Cat # PAB25874).

Gene Info — PRKCD

Entrez GeneID	5580
Protein Accession#	Q05655
Gene Name	PRKCD
Gene Alias	MAY1, MGC49908, PKCD, nPKC-delta
Gene Description	protein kinase C, delta
Omim ID	176977
Gene Ontology	Hyperlink

Gene Summary

Protein kinase C (PKC) is a family of serine- and threonine-specific protein kinases that can be activated by calcium and the second messenger diacylglycerol. PKC family members phosphorylate a wide variety of protein targets and are known to be involved in diverse cellular signaling pathways. PKC family members also serve as major receptors for phorbol esters, a class of tumor promoters. Each member of the PKC family has a specific expression profile and is believed to play distinct roles in cells. The protein encoded by this gene is one of the PKC family members. Studies both in human and mice demonstrate that this kinase is involved in B cell signaling and in the regulation of growth, apoptosis, and differentiation of a variety of cell types. Alternatively spliced transcript variants encoding the same protein have been observed. [provided by RefSeq]

Other Designations

protein kinase C delta VIII

Pathway

- [Chemokine signaling pathway](#)
- [Fc epsilon RI signaling pathway](#)
- [Fc gamma R-mediated phagocytosis](#)
- [GnRH signaling pathway](#)
- [Neurotrophin signaling pathway](#)
- [Tight junction](#)
- [Type II diabetes mellitus](#)
- [Vascular smooth muscle contraction](#)

Disease

- [Cardiovascular Diseases](#)
- [Diabetes Mellitus](#)
- [Edema](#)
- [Genetic Predisposition to Disease](#)
- [Tobacco Use Disorder](#)