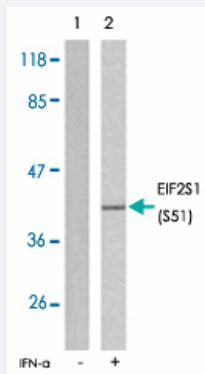


EIF2S1 (phospho S51) polyclonal antibody

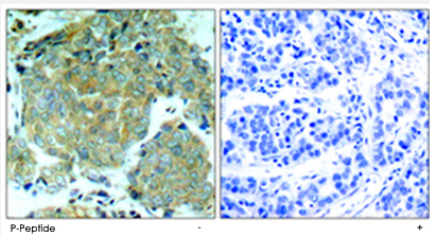
Catalog # PAB25861 Size 100 ug

Applications



Western Blot (Cell lysate)

Western blot analysis of extracts from K-562 cells untreated or treated with IFN- α (100 ng/mL 20 min) using EIF2S1 (phospho S51) polyclonal antibody (Cat # PAB25861).



Immunohistochemistry (Formalin/PFA-fixed paraffin-embedded sections)

Immunohistochemical analysis of paraffin-embedded human breast carcinoma tissue using EIF2S1 (phospho S51) polyclonal antibody (Cat # PAB25861).

Specification

Product Description	Rabbit polyclonal antibody raised against synthetic phosphopeptide of EIF2S1.
Immunogen	Synthetic phosphopeptide corresponding to residues surrounding S51 of human EIF2S1.
Sequence	E-L-Sp-R-R
Host	Rabbit
Theoretical MW (kDa)	38
Reactivity	Human, Mouse, Rat

Form	Liquid
Purification	Affinity chromatography
Concentration	1 mg/mL
Recommend Usage	Immunohistochemistry (1:50-1:100) Western Blot (1:500-1:1000) The optimal working dilution should be determined by the end user.
Storage Buffer	In PBS (without Mg ²⁺ and Ca ²⁺), 150 mM NaCl, pH 7.4 (50% glycerol, 0.02% sodium azide)
Storage Instruction	Store at -20°C. Aliquot to avoid repeated freezing and thawing.
Note	This product contains sodium azide: a POISONOUS AND HAZARDOUS SUBSTANCE which should be handled by trained staff only.

Applications

- Western Blot (Cell lysate)

Western blot analysis of extracts from K-562 cells untreated or treated with IFN-alpha (100 ng/mL 20 min) using EIF2S1 (phospho S51) polyclonal antibody (Cat # PAB25861).

- Immunohistochemistry (Formalin/PFA-fixed paraffin-embedded sections)

Immunohistochemical analysis of paraffin-embedded human breast carcinoma tissue using EIF2S1 (phospho S51) polyclonal antibody (Cat # PAB25861).

Gene Info — EIF2S1

Entrez GeneID	1965
Protein Accession#	P05198
Gene Name	EIF2S1
Gene Alias	EIF-2, EIF-2A, EIF-2alpha, EIF2, EIF2A
Gene Description	eukaryotic translation initiation factor 2, subunit 1 alpha, 35kDa
Omim ID	603907
Gene Ontology	Hyperlink

Gene Summary

The translation initiation factor eIF2 catalyzes the first regulated step of protein synthesis initiation, promoting the binding of the initiator tRNA to 40S ribosomal subunits. Binding occurs as a ternary complex of methionyl-tRNA, eIF2, and GTP. eIF2 is composed of 3 nonidentical subunits, alpha (36 kD), beta (38 kD, MIM 603908), and gamma (52 kD, MIM 300161). The rate of formation of the ternary complex is modulated by the phosphorylation state of eIF2-alpha (Ernst et al., 1987 [PubMed 2948954]).[supplied by OMIM]

Other Designations

eIF-2-alpha|eukaryotic translation initiation factor 2, subunit 1 (alpha, 35kD)

Disease

- [Hepatitis B](#)