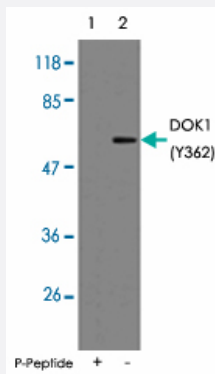


# DOK1 (phospho Y362) polyclonal antibody

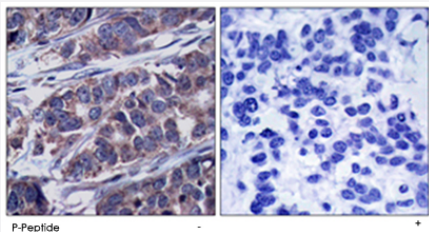
Catalog # PAB25858      Size 100 ug

## Applications



### Western Blot (Cell lysate)

Western blot analysis of extracts from Jurkat cells using DOK1 (phospho Y362) polyclonal antibody (Cat # PAB25858).



### Immunohistochemistry (Formalin/PFA-fixed paraffin-embedded sections)

Immunohistochemical analysis of paraffin-embedded human breast carcinoma tissue using DOK1 (phospho Y362) polyclonal antibody (Cat # PAB25858).

## Specification

<b>Product Description</b>	Rabbit polyclonal antibody raised against synthetic phosphopeptide of DOK1.
<b>Immunogen</b>	Synthetic phosphopeptide corresponding to residues surrounding Y362 of human DOK1.
<b>Sequence</b>	P-I-Yp-D-E
<b>Host</b>	Rabbit
<b>Theoretical MW (kDa)</b>	62
<b>Reactivity</b>	Human, Mouse, Rat

Form	Liquid
Purification	Affinity chromatography
Concentration	1 mg/mL
Recommend Usage	Immunohistochemistry (1:50-1:100) Western Blot (1:500-1:1000) The optimal working dilution should be determined by the end user.
Storage Buffer	In PBS (without Mg <sup>2+</sup> and Ca <sup>2+</sup> ), 150 mM NaCl, pH 7.4 (50% glycerol, 0.02% sodium azide)
Storage Instruction	Store at -20°C. Aliquot to avoid repeated freezing and thawing.
Note	This product contains sodium azide: a POISONOUS AND HAZARDOUS SUBSTANCE which should be handled by trained staff only.

## Applications

- Western Blot (Cell lysate)

Western blot analysis of extracts from Jurkat cells using DOK1 (phospho Y362) polyclonal antibody (Cat # PAB25858).

- Immunohistochemistry (Formalin/PFA-fixed paraffin-embedded sections)

Immunohistochemical analysis of paraffin-embedded human breast carcinoma tissue using DOK1 (phospho Y362) polyclonal antibody (Cat # PAB25858).

## Gene Info — DOK1

Entrez GeneID	<a href="#">1796</a>
Protein Accession#	<a href="#">Q99704</a>
Gene Name	DOK1
Gene Alias	MGC117395, MGC138860, P62DOK
Gene Description	docking protein 1, 62kDa (downstream of tyrosine kinase 1)
Omim ID	<a href="#">602919</a>
Gene Ontology	<a href="#">Hyperlink</a>

**Gene Summary**

Docking protein 1 is constitutively tyrosine phosphorylated in hematopoietic progenitors isolated from chronic myelogenous leukemia (CML) patients in the chronic phase. It may be a critical substrate for p210(bcr/abl), a chimeric protein whose presence is associated with CML. Docking protein 1 contains a putative pleckstrin homology domain at the amino terminus and ten PXXP SH3 recognition motifs. Docking protein 2 binds p120 (RasGAP) from CML cells. It has been postulated to play a role in mitogenic signaling. [provided by RefSeq]

**Other Designations**

Downstream of tyrosine kinase 1|docking protein 1|docking protein 1 (downstream of tyrosine kinase 1)|docking protein 1, 62kD (downstream of tyrosine kinase 1)

**Disease**

- [Genetic Predisposition to Disease](#)
- [Leukemia](#)