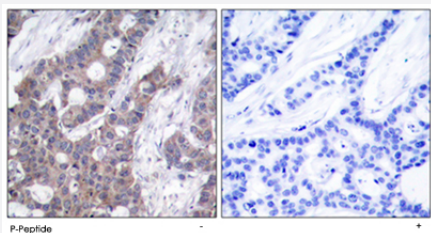


STMN1 (phospho S15) polyclonal antibody

Catalog # PAB25829 Size 100 ug

Applications



Immunohistochemistry (Formalin/PFA-fixed paraffin-embedded sections)

Immunohistochemical analysis of paraffin-embedded human breast carcinoma tissue using STMN1 (phospho S15) polyclonal antibody (Cat # PAB25829).

Specification

Product Description	Rabbit polyclonal antibody raised against synthetic phosphopeptide of STMN1.
Immunogen	Synthetic phosphopeptide corresponding to residues surrounding S15 of human STMN1.
Sequence	R-A-Sp-G-Q
Host	Rabbit
Theoretical MW (kDa)	19
Reactivity	Human, Mouse, Rat
Form	Liquid
Purification	Affinity chromatography
Concentration	1 mg/mL
Recommend Usage	Immunohistochemistry (1:50-1:100) The optimal working dilution should be determined by the end user.
Storage Buffer	In PBS (without Mg^{2+} and Ca^{2+}), 150 mM NaCl, pH 7.4 (50% glycerol, 0.02% sodium azide)

Storage Instruction

Store at -20°C.
Aliquot to avoid repeated freezing and thawing.

Note

This product contains sodium azide: a POISONOUS AND HAZARDOUS SUBSTANCE which should be handled by trained staff only.

Applications

- Immunohistochemistry (Formalin/PFA-fixed paraffin-embedded sections)

Immunohistochemical analysis of paraffin-embedded human breast carcinoma tissue using STMN1 (phospho S15) polyclonal antibody (Cat # PAB25829).

Gene Info — STMN1

Entrez GeneID[3925](#)**Protein Accession#**[P16949](#)**Gene Name**

STMN1

Gene Alias

LAP18, Lag, OP18, PP17, PP19, PR22, SMN

Gene Description

stathmin 1/oncoprotein 18

Omim ID[151442](#)**Gene Ontology**[Hyperlink](#)**Gene Summary**

This gene belongs to the stathmin family of genes. It encodes a ubiquitous cytosolic phosphoprotein proposed to function as an intracellular relay integrating regulatory signals of the cellular environment. The encoded protein is involved in the regulation of the microtubule filament system by destabilizing microtubules. It prevents assembly and promotes disassembly of microtubules. Multiple transcript variants encoding different isoforms have been found for this gene. [provided by RefSeq]

Other Designations

OTTHUMP00000008527|OTTHUMP00000008528|OTTHUMP00000008530|leukemia-associated phosphoprotein p18|metablastin|oncoprotein 18|phosphoprotein 19|prosofin|stathmin 1

Pathway

- [MAPK signaling pathway](#)

Disease

- [Anorexia Nervosa](#)
- [Bulimia](#)
- [Genetic Predisposition to Disease](#)
- [Startle Reaction](#)