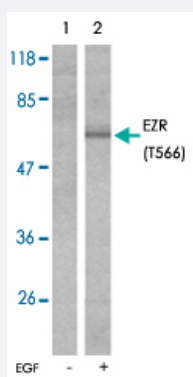


EZR (phospho T566) polyclonal antibody

Catalog # PAB25825 Size 100 ug

Applications



Western Blot (Cell lysate)

Western blot analysis of extracts from A431 cells untreated or EGF-treated (200 ng/mL 30 min) using EZR (phospho T566) polyclonal antibody (Cat # PAB25825).

Specification

Product Description	Rabbit polyclonal antibody raised against synthetic phosphopeptide of EZR.
Immunogen	Synthetic phosphopeptide corresponding to residues surrounding T566 of human EZR.
Sequence	Y-K-Tp-L-R
Host	Rabbit
Theoretical MW (kDa)	81
Reactivity	Human, Mouse, Rat
Form	Liquid
Purification	Affinity chromatography
Concentration	1 mg/mL
Recommend Usage	Western Blot (1:500-1:1000) The optimal working dilution should be determined by the end user.

Storage Buffer	In PBS (without Mg ²⁺ and Ca ²⁺), 150 mM NaCl, pH 7.4 (50% glycerol, 0.02% sodium azide)
Storage Instruction	Store at -20°C. Aliquot to avoid repeated freezing and thawing.
Note	This product contains sodium azide: a POISONOUS AND HAZARDOUS SUBSTANCE which should be handled by trained staff only.

Applications

- Western Blot (Cell lysate)

Western blot analysis of extracts from A431 cells untreated or EGF-treated (200 ng/mL 30 min) using EZR (phospho T566) polyclonal antibody (Cat # PAB25825).

Gene Info — EZR

Entrez GeneID	7430
Protein Accession#	P15311
Gene Name	EZR
Gene Alias	CVIL, CVL, DKFZp762H157, FLJ26216, MGC1584, VIL2
Gene Description	ezrin
Omim ID	123900
Gene Ontology	Hyperlink
Gene Summary	The cytoplasmic peripheral membrane protein encoded by this gene functions as a protein-tyrosine kinase substrate in microvilli. As a member of the ERM protein family, this protein serves as an intermediate between the plasma membrane and the actin cytoskeleton. This protein plays a key role in cell surface structure adhesion, migration and organization, and it has been implicated in various human cancers. A pseudogene located on chromosome 3 has been identified for this gene. Alternatively spliced variants have also been described for this gene. [provided by RefSeq]
Other Designations	OTTHUMP00000017506 OTTHUMP00000017507 cytovillin 2 villin 2 (ezrin)

Pathway

- [Leukocyte transendothelial migration](#)
- [Pathogenic Escherichia coli infection - EHEC](#)

- [Regulation of actin cytoskeleton](#)

Disease

- [Asthma](#)
- [Cardiovascular Diseases](#)
- [Diabetes Mellitus](#)
- [Edema](#)
- [Genetic Predisposition to Disease](#)
- [Hypersensitivity](#)
- [Lung Neoplasms](#)
- [Ovarian Neoplasms](#)
- [Pulmonary Disease](#)
- [Tobacco Use Disorder](#)
- [Urinary Bladder Neoplasms](#)
- [Werner syndrome](#)