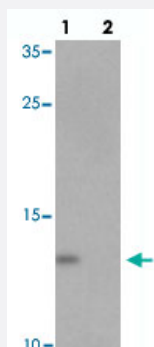


# YPEL5 polyclonal antibody

Catalog # PAB25810

Size 100 ug

## Applications



### Western Blot (Cell lysate)

Western blot analysis of YPEL5 in A-20 cell lysate with YPEL5 polyclonal antibody (Cat # PAB25810) at 1 ug/mL in (lane 1) the absence and (lane 2) the presence of blocking peptide.



### Immunocytochemistry

Immunocytochemical analysis of YPEL5 in A-20 cell lysate with YPEL5 polyclonal antibody (Cat # PAB25810) at 2.5 ug/mL.

## Specification

<b>Product Description</b>	Rabbit polyclonal antibody raised against synthetic peptide of YPEL5.
<b>Immunogen</b>	A synthetic peptide corresponding to 14 amino acids at N-terminus of human YPEL5.
<b>Host</b>	Rabbit
<b>Reactivity</b>	Human, Mouse
<b>Form</b>	Liquid
<b>Purification</b>	Peptide affinity purification
<b>Concentration</b>	1 mg/mL

Isotype	IgG
Recommend Usage	Western Blot (1 ug/mL) Immunocytochemistry (2.5 ug/mL) The optimal working dilution should be determined by the end user.
Storage Buffer	In PBS (0.02% sodium azide)
Storage Instruction	Store at 4°C for three months. For long term storage store at -20°C. Aliquot to avoid repeated freezing and thawing.
Note	This product contains sodium azide: a POISONOUS AND HAZARDOUS SUBSTANCE which should be handled by trained staff only.

## Applications

- Western Blot (Cell lysate)

Western blot analysis of YPEL5 in A-20 cell lysate with YPEL5 polyclonal antibody (Cat # PAB25810) at 1 ug/mL in (lane 1) the absence and (lane 2) the presence of blocking peptide.

- Immunocytochemistry

Immunocytochemical analysis of YPEL5 in A-20 cell lysate with YPEL5 polyclonal antibody (Cat # PAB25810) at 2.5 ug/mL.

- Enzyme-linked Immunoabsorbent Assay

## Gene Info — YPEL5

Entrez GeneID	<a href="#">51646</a>
Protein Accession#	<a href="#">NP_057145</a>
Gene Name	YPEL5
Gene Alias	CGI-127
Gene Description	yippee-like 5 (Drosophila)
Omim ID	<a href="#">609726</a>
Gene Ontology	<a href="#">Hyperlink</a>
Other Designations	OTTHUMP00000123521 OTTHUMP00000123522 yippee protein yippee-like 5