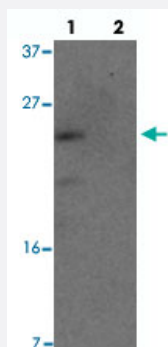


# YPEL1 polyclonal antibody

Catalog # PAB25807      Size 100 ug

## Applications



### Western Blot (Cell lysate)

Western blot analysis of YPEL1 in HeLa cell lysate with YPEL1 polyclonal antibody (Cat # PAB25807) at 1 ug/mL in (lane 1) the absence and (lane 2) the presence of blocking peptide.



### Immunocytochemistry

Immunocytochemical analysis of YPEL1 in HeLa cell lysate with YPEL1 polyclonal antibody (Cat # PAB25807) at 2.5 ug/mL.

## Specification

|                            |   |
|----------------------------|---|
| <b>Product Description</b> | Rabbit polyclonal antibody raised against synthetic peptide of YPEL1.             |
| <b>Immunogen</b>           | A synthetic peptide corresponding to 11 amino acids at N-terminus of human YPEL1. |
| <b>Host</b>                | Rabbit  |
| <b>Reactivity</b>          | Human, Mouse, Rat   |
| <b>Form</b>                | Liquid  |
| <b>Purification</b>        | Peptide affinity purification   |
| <b>Concentration</b>       | 1 mg/mL   |

|                     |   |
|---------------------|---|
| Isotype             | IgG   |
| Recommend Usage     | Western Blot (1 ug/mL)<br>Immunocytochemistry (2.5 ug/mL)<br>The optimal working dilution should be determined by the end user. |
| Storage Buffer      | In PBS (0.02% sodium azide)   |
| Storage Instruction | Store at 4°C for three months. For long term storage store at -20°C.<br>Aliquot to avoid repeated freezing and thawing.         |
| Note                | This product contains sodium azide: a POISONOUS AND HAZARDOUS SUBSTANCE which should be handled by trained staff only.          |

## Applications

- Western Blot (Cell lysate)

Western blot analysis of YPEL1 in HeLa cell lysate with YPEL1 polyclonal antibody (Cat # PAB25807) at 1 ug/mL in (lane 1) the absence and (lane 2) the presence of blocking peptide.

- Immunocytochemistry

Immunocytochemical analysis of YPEL1 in HeLa cell lysate with YPEL1 polyclonal antibody (Cat # PAB25807) at 2.5 ug/mL.

- Enzyme-linked Immunoabsorbent Assay

## Gene Info — YPEL1

|                    |  |
|--------------------|--|
| Entrez GeneID      | <a href="#">29799</a>  |
| Protein Accession# | <a href="#">NP_037445</a>  |
| Gene Name          | YPEL1  |
| Gene Alias         | FKSG3, MGC64992  |
| Gene Description   | yippee-like 1 (Drosophila)   |
| Omim ID            | <a href="#">608082</a>   |
| Gene Ontology      | <a href="#">Hyperlink</a>  |
| Gene Summary       | This gene encodes a potential zinc-binding protein and is located in the region associated with Di George syndrome on chromosome 22. The encoded protein may play a role in the regulation of cellular morphology and may function during craniofacial development. [provided by RefSeq] |

**Other Designations**

DiGeorge syndrome-related proteinlyippee-like 1

**Disease**

- [Tobacco Use Disorder](#)