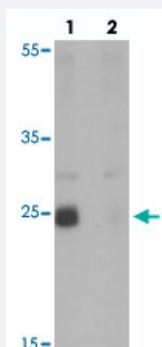


NKX2-8 polyclonal antibody

Catalog # PAB25801

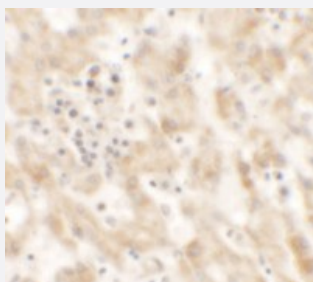
Size 100 ug

Applications



Western Blot (Tissue lysate)

Western blot analysis of NKX2-8 in rat liver tissue with NKX2-8 polyclonal antibody (Cat # PAB25801) at 1 ug/mL in (lane 1) the absence and (lane 2) the presence of blocking peptide.



Immunohistochemistry

Immunohistochemical analysis of NKX2-8 in human liver tissue with NKX2-8 polyclonal antibody (Cat # PAB25801) at 2.5 ug/mL.

Specification

Product Description	Rabbit polyclonal antibody raised against synthetic peptide of NKX2-8.
Immunogen	A synthetic peptide corresponding to 19 amino acids at internal region of human NKX2-8.
Host	Rabbit
Reactivity	Human, Mouse, Rat
Specificity	NKX2-8 antibody is predicted to not cross-react with other NK2 homeobox family members.
Form	Liquid
Purification	Peptide affinity purification

Concentration	1 mg/mL
Isotype	IgG
Recommend Usage	Western Blot (1 ug/mL) Immunohistochemistry (2.5 ug/mL) The optimal working dilution should be determined by the end user.
Storage Buffer	In PBS (0.02% sodium azide)
Storage Instruction	Store at 4°C for three months. For long term storage store at -20°C. Aliquot to avoid repeated freezing and thawing.
Note	This product contains sodium azide: a POISONOUS AND HAZARDOUS SUBSTANCE which should be handled by trained staff only.

Applications

- Western Blot (Tissue lysate)

Western blot analysis of NKX2-8 in rat liver tissue with NKX2-8 polyclonal antibody (Cat # PAB25801) at 1 ug/mL in (lane 1) the absence and (lane 2) the presence of blocking peptide.

- Immunohistochemistry

Immunohistochemical analysis of NKX2-8 in human liver tissue with NKX2-8 polyclonal antibody (Cat # PAB25801) at 2.5 ug/mL.

- Enzyme-linked Immunoabsorbent Assay

Gene Info — NKX2-8

Entrez GeneID	26257
Protein Accession#	NP_055175
Gene Name	NKX2-8
Gene Alias	NKX2.8, NKX2H, Nkx2-9
Gene Description	NK2 homeobox 8
Omim ID	603245
Gene Ontology	Hyperlink
Gene Summary	locus 8

Other Designations

NK-2 homolog 8|NK-2 homolog H|NK2 transcription factor related, locus 8
