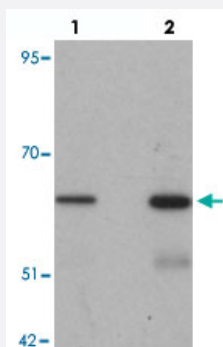


GRB10 polyclonal antibody

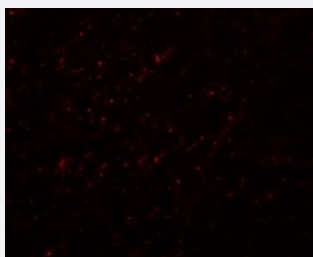
Catalog # PAB25795 Size 100 ug

Applications



Western Blot (Cell lysate)

Western blot analysis of GRB10 in SK-N-SH cell lysate with GRB10 polyclonal antibody (Cat # PAB25795) at (lane 1) 1 and (lane 2) 2 ug/mL.



Immunofluorescence

Immunofluorescence analysis of GRB10 in rat brain with GRB10 polyclonal antibody (Cat # PAB25795) at 20 ug/mL.

Specification

Product Description	Rabbit polyclonal antibody raised against synthetic peptide of GRB10.
Immunogen	A synthetic peptide corresponding to 17 amino acids at C-terminus of human GRB10.
Host	Rabbit
Reactivity	Human, Mouse, Rat
Specificity	At least three isoforms of GRB10 are known to exist; this antibody will detect all three isoforms.
Form	Liquid
Purification	Peptide affinity purification

Concentration	1 mg/mL
Isotype	IgG
Recommend Usage	Western Blot (1-2 ug/mL) Immunofluorescence (20 ug/mL) The optimal working dilution should be determined by the end user.
Storage Buffer	In PBS (0.02% sodium azide)
Storage Instruction	Store at 4°C for three months. For long term storage store at -20°C. Aliquot to avoid repeated freezing and thawing.
Note	This product contains sodium azide: a POISONOUS AND HAZARDOUS SUBSTANCE which should be handled by trained staff only.

Applications

- Western Blot (Cell lysate)

Western blot analysis of GRB10 in SK-N-SH cell lysate with GRB10 polyclonal antibody (Cat # PAB25795) at (lane 1) 1 and (lane 2) 2 ug/mL.

- Immunofluorescence

Immunofluorescence analysis of GRB10 in rat brain with GRB10 polyclonal antibody (Cat # PAB25795) at 20 ug/mL.

- Enzyme-linked Immunoabsorbent Assay

Gene Info — GRB10

Entrez GeneID	2887
Protein Accession#	NP_005302
Gene Name	GRB10
Gene Alias	GRB-IR, Grb-10, IRBP, KIAA0207, MEG1, RSS
Gene Description	growth factor receptor-bound protein 10
Omim ID	601523
Gene Ontology	Hyperlink

Gene Summary

The product of this gene belongs to a small family of adapter proteins that are known to interact with a number of receptor tyrosine kinases and signaling molecules. This gene encodes a growth factor receptor-binding protein that interacts with insulin receptors and insulin-like growth-factor receptors. Overexpression of some isoforms of the encoded protein inhibits tyrosine kinase activity and results in growth suppression. This gene is imprinted in a highly isoform- and tissue-specific manner. Alternatively spliced transcript variants encoding different isoforms have been identified. [provided by RefSeq]

Other Designations

GRB10 adaptor protein|insulin receptor-binding protein Grb-IR|maternally expressed gene 1

Disease

- [Birth Weight](#)
- [Diabetes Mellitus](#)
- [Overweight](#)