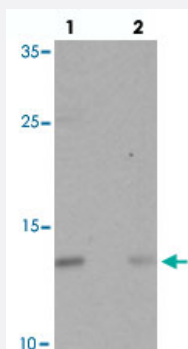


# C9orf116 polyclonal antibody

Catalog # PAB25794

Size 100 ug

## Applications



### Western Blot (Cell lysate)

Western blot analysis of C9orf116 in A-20 cell lysate with C9orf116 polyclonal antibody (Cat # PAB25794) at 1 ug/mL in (lane 1) the absence and (lane 2) the presence of blocking peptide.



### Immunocytochemistry

Immunocytochemical analysis of C9orf116 in A-20 cell lysate with C9orf116 polyclonal antibody (Cat # PAB25794) at 2.5 ug/mL.

## Specification

<b>Product Description</b>	Rabbit polyclonal antibody raised against synthetic peptide of C9orf116.
<b>Immunogen</b>	A synthetic peptide corresponding to 16 amino acids at N-terminus of human C9orf116.
<b>Host</b>	Rabbit
<b>Reactivity</b>	Human, Mouse
<b>Specificity</b>	PIERCE1 antibody is predicted to not cross-react with other UPF0691 family members.
<b>Form</b>	Liquid
<b>Purification</b>	Peptide affinity purification

Concentration	1 mg/mL
Isotype	IgG
Recommend Usage	Western Blot (1 ug/mL) Immunocytochemistry (2.5 ug/mL) The optimal working dilution should be determined by the end user.
Storage Buffer	In PBS (0.02% sodium azide)
Storage Instruction	Store at 4°C for three months. For long term storage store at -20°C. Aliquot to avoid repeated freezing and thawing.
Note	This product contains sodium azide: a POISONOUS AND HAZARDOUS SUBSTANCE which should be handled by trained staff only.

## Applications

- Western Blot (Cell lysate)

Western blot analysis of C9orf116 in A-20 cell lysate with C9orf116 polyclonal antibody (Cat # PAB25794) at 1 ug/mL in (lane 1) the absence and (lane 2) the presence of blocking peptide.

- Immunocytochemistry

Immunocytochemical analysis of C9orf116 in A-20 cell lysate with C9orf116 polyclonal antibody (Cat # PAB25794) at 2.5 ug/mL.

- Enzyme-linked Immunoabsorbent Assay

## Gene Info — C9orf116

Entrez GeneID	<a href="#">138162</a>
Protein Accession#	<a href="#">Q5BN46</a>
Gene Name	C9orf116
Gene Alias	FLJ13945, MGC29761
Gene Description	chromosome 9 open reading frame 116
Gene Ontology	<a href="#">Hyperlink</a>
Other Designations	OTTHUMP00000022533 OTTHUMP00000022534 hypothetical protein LOC138162 pierce 1