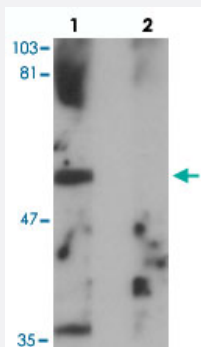


PPHLN1 polyclonal antibody

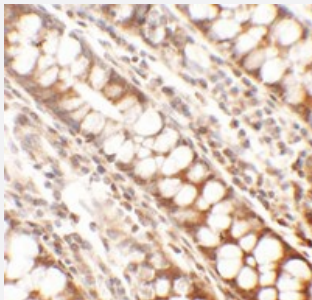
Catalog # PAB25788 Size 100 ug

Applications



Western Blot (Tissue lysate)

Western blot analysis of PPHLN1 in mouse colon tissue with PPHLN1 polyclonal antibody (Cat # PAB25788) at 1 ug/mL in (lane 1) the absence and (lane 2) the presence of blocking peptide.



Immunohistochemistry

Immunohistochemical analysis of PPHLN1 in human colon tissue with PPHLN1 polyclonal antibody (Cat # PAB25788) at 2.5 ug/mL.

Specification

Product Description	Rabbit polyclonal antibody raised against synthetic peptide of PPHLN1.
Immunogen	A synthetic peptide corresponding to 16 amino acids at internal region of human PPHLN1.
Host	Rabbit
Reactivity	Human, Mouse
Form	Liquid
Purification	Peptide affinity purification
Concentration	1 mg/mL

Isotype	IgG
Recommend Usage	Western Blot (1 ug/mL) Immunohistochemistry (2.5 ug/mL) The optimal working dilution should be determined by the end user.
Storage Buffer	In PBS (0.02% sodium azide)
Storage Instruction	Store at 4°C for three months. For long term storage store at -20°C. Aliquot to avoid repeated freezing and thawing.
Note	This product contains sodium azide: a POISONOUS AND HAZARDOUS SUBSTANCE which should be handled by trained staff only.

Applications

- Western Blot (Tissue lysate)

Western blot analysis of PPHLN1 in mouse colon tissue with PPHLN1 polyclonal antibody (Cat # PAB25788) at 1 ug/mL in (lane 1) the absence and (lane 2) the presence of blocking peptide.

- Immunohistochemistry

Immunohistochemical analysis of PPHLN1 in human colon tissue with PPHLN1 polyclonal antibody (Cat # PAB25788) at 2.5 ug/mL.

- Enzyme-linked Immunoabsorbent Assay

Gene Info — PPHLN1

Entrez GeneID	51535
Protein Accession#	NP_958848
Gene Name	PPHLN1
Gene Alias	HSPC206, HSPC232, MGC48786
Gene Description	periphilin 1
Omim ID	608150
Gene Ontology	Hyperlink

Gene Summary

The protein encoded by this gene is one of the several proteins that become sequentially incorporated into the cornified cell envelope during the terminal differentiation of keratinocyte at the outer layers of epidermis. This protein interacts with periplakin, which is known as a precursor of the cornified cell envelope. The cellular localization pattern and insolubility of this protein suggest that it may play a role in epithelial differentiation and contribute to epidermal integrity and barrier formation. Multiple alternatively spliced transcript variants encoding distinct isoforms have been observed. [provided by RefSeq]

Other Designations

gastric cancer antigen Ga50

Disease

- [Tobacco Use Disorder](#)