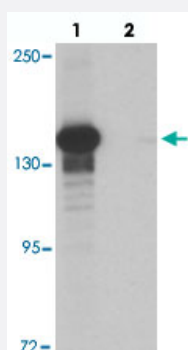


# KDM6B polyclonal antibody

Catalog # PAB25782

Size 100 ug

## Applications



### Western Blot (Cell lysate)

Western blot analysis of KDM6B in K-562 cell lysate with KDM6B polyclonal antibody (Cat # PAB25782) at 0.5 ug/mL in (lane 1) the absence and (lane 2) the presence of blocking peptide.



### Immunocytochemistry

Immunocytochemical analysis of KDM6B in K-562 cell lysate with KDM6B polyclonal antibody (Cat # PAB25782) at 2.5 ug/mL.

## Specification

<b>Product Description</b>	Rabbit polyclonal antibody raised against synthetic peptide of KDM6B.
<b>Immunogen</b>	A synthetic peptide corresponding to 16 amino acids at N-terminus of human KDM6B.
<b>Host</b>	Rabbit
<b>Reactivity</b>	Human, Mouse, Rat
<b>Specificity</b>	This antibody is specific for JMJD3 and will not recognize other JMJD proteins.
<b>Form</b>	Liquid
<b>Purification</b>	Peptide affinity purification

Concentration	1 mg/mL
Isotype	IgG
Recommend Usage	Western Blot (0.5 ug/mL) Immunocytochemistry (2.5 ug/mL) The optimal working dilution should be determined by the end user.
Storage Buffer	In PBS (0.02% sodium azide)
Storage Instruction	Store at 4°C for three months. For long term storage store at -20°C. Aliquot to avoid repeated freezing and thawing.
Note	This product contains sodium azide: a POISONOUS AND HAZARDOUS SUBSTANCE which should be handled by trained staff only.

## Applications

- Western Blot (Cell lysate)

Western blot analysis of KDM6B in K-562 cell lysate with KDM6B polyclonal antibody (Cat # PAB25782) at 0.5 ug/mL in (lane 1) the absence and (lane 2) the presence of blocking peptide.

- Immunocytochemistry

Immunocytochemical analysis of KDM6B in K-562 cell lysate with KDM6B polyclonal antibody (Cat # PAB25782) at 2.5 ug/mL.

- Enzyme-linked Immunoabsorbent Assay

## Gene Info — KDM6B

Entrez GeneID	<a href="#">23135</a>
Protein Accession#	<a href="#">EAW90126</a>
Gene Name	KDM6B
Gene Alias	JMJD3
Gene Description	lysine (K)-specific demethylase 6B
Omim ID	<a href="#">611577</a>
Gene Ontology	<a href="#">Hyperlink</a>
Other Designations	jmjC domain-containing protein 3 jumonji domain containing 3 histone lysine demethylase jumonji domain-containing protein 3 lysine demethylase 6B lysine-specific demethylase 6B