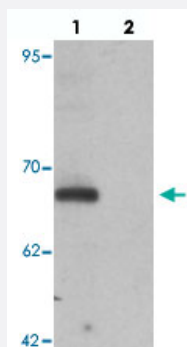


KPNA5 polyclonal antibody

Catalog # PAB25781

Size 100 ug

Applications



Western Blot (Cell lysate)

Western blot analysis of KPNA5 in EL4 cell lysate with KPNA5 polyclonal antibody (Cat # PAB25781) at 1 ug/mL in (lane 1) the absence and (lane 2) the presence of blocking peptide.



Immunocytochemistry

Immunocytochemical analysis of KPNA5 in EL4 cell lysate with KPNA5 polyclonal antibody (Cat # PAB25781) at 5 ug/mL.

Specification

Product Description	Rabbit polyclonal antibody raised against synthetic peptide of KPNA5.
Immunogen	A synthetic peptide corresponding to 18 amino acids at N-terminus of human KPNA5.
Host	Rabbit
Reactivity	Human, Mouse
Specificity	KPNA5 antibody is predicted to not cross-react with other Importin alpha family members.
Form	Liquid
Purification	Peptide affinity purification

Concentration	1 mg/mL
Isotype	IgG
Recommend Usage	Western Blot (1 ug/mL) Immunocytochemistry (5 ug/mL) The optimal working dilution should be determined by the end user.
Storage Buffer	In PBS (0.02% sodium azide)
Storage Instruction	Store at 4°C for three months. For long term storage store at -20°C. Aliquot to avoid repeated freezing and thawing.
Note	This product contains sodium azide: a POISONOUS AND HAZARDOUS SUBSTANCE which should be handled by trained staff only.

Applications

- Western Blot (Cell lysate)

Western blot analysis of KPNA5 in EL4 cell lysate with KPNA5 polyclonal antibody (Cat # PAB25781) at 1 ug/mL in (lane 1) the absence and (lane 2) the presence of blocking peptide.

- Immunocytochemistry

Immunocytochemical analysis of KPNA5 in EL4 cell lysate with KPNA5 polyclonal antibody (Cat # PAB25781) at 5 ug/mL.

- Enzyme-linked Immunoabsorbent Assay

Gene Info — KPNA5

Entrez GeneID	3841
Protein Accession#	CAH71948
Gene Name	KPNA5
Gene Alias	IPOA6, SRP6
Gene Description	karyopherin alpha 5 (importin alpha 6)
Omim ID	604545
Gene Ontology	Hyperlink

Gene Summary

The transport of molecules between the nucleus and the cytoplasm in eukaryotic cells is mediated by the nuclear pore complex (NPC) which consists of 60-100 proteins and is probably 120 million daltons in molecular size. Small molecules (up to 70 kD) can pass through the nuclear pore by non selective diffusion; larger molecules are transported by an active process. Most nuclear proteins contain short basic amino acid sequences known as nuclear localization signals (NLSs). KPNA5 protein belongs to the importin alpha protein family and is thought to be involved in NLS-dependent protein import into the nucleus. [provided by RefSeq]

Other Designations

OTTHUMP00000017076|importin alpha 6|karyopherin alpha 5