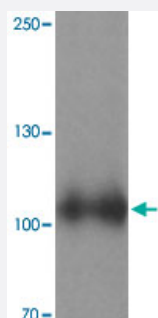


# SIPA1 polyclonal antibody

Catalog # PAB25780

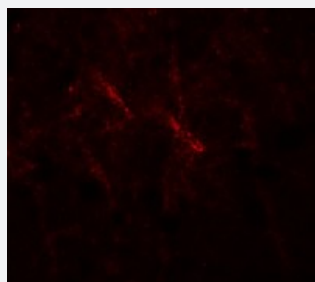
Size 100 ug

## Applications



### Western Blot (Tissue lysate)

Western blot analysis of SIPA1 in human brain tissue with SIPA1 polyclonal antibody (Cat # PAB25780) at 1 ug/mL.



### Immunofluorescence

Immunofluorescence analysis of SIPA1 in human brain with SIPA1 polyclonal antibody (Cat # PAB25780) at 20 ug/mL.

## Specification

<b>Product Description</b>	Rabbit polyclonal antibody raised against synthetic peptide of SIPA1.
<b>Immunogen</b>	A synthetic peptide corresponding to 19 amino acids at N-terminus of human SIPA1.
<b>Host</b>	Rabbit
<b>Reactivity</b>	Human
<b>Specificity</b>	At least three isoforms of SIPA1 are known to exist; this antibody will recognize all three isoforms. This antibody is specific for SIPA1 and will not recognize the other SIPA1 family of proteins.
<b>Form</b>	Liquid

<b>Purification</b>	Peptide affinity purification
<b>Concentration</b>	1 mg/mL
<b>Isotype</b>	IgG
<b>Recommend Usage</b>	Western Blot (1 ug/mL) Immunofluorescence (20 ug/mL) The optimal working dilution should be determined by the end user.
<b>Storage Buffer</b>	In PBS (0.02% sodium azide)
<b>Storage Instruction</b>	Store at 4°C for three months. For long term storage store at -20°C. Aliquot to avoid repeated freezing and thawing.
<b>Note</b>	This product contains sodium azide: a POISONOUS AND HAZARDOUS SUBSTANCE which should be handled by trained staff only.

## Applications

- Western Blot (Tissue lysate)

Western blot analysis of SIPA1 in human brain tissue with SIPA1 polyclonal antibody (Cat # PAB25780) at 1 ug/mL.

- Immunofluorescence

Immunofluorescence analysis of SIPA1 in human brain with SIPA1 polyclonal antibody (Cat # PAB25780) at 20 ug/mL.

- Enzyme-linked Immunoabsorbent Assay

## Gene Info — SIPA1

<b>Entrez GeneID</b>	<a href="#">6494</a>
<b>Protein Accession#</b>	<a href="#">AAH10492</a>
<b>Gene Name</b>	SIPA1
<b>Gene Alias</b>	MGC102688, MGC17037, SPA1
<b>Gene Description</b>	signal-induced proliferation-associated 1
<b>Omim ID</b>	<a href="#">602180</a>
<b>Gene Ontology</b>	<a href="#">Hyperlink</a>

**Gene Summary**

The product of this gene is a mitogen induced GTPase activating protein (GAP). It exhibits a specific GAP activity for Ras-related regulatory proteins Rap1 and Rap2, but not for Ran or other small GTPases. This protein may also hamper mitogen-induced cell cycle progression when abnormally or prematurely expressed. It is localized to the perinuclear region. Two alternatively spliced variants encoding the same isoform have been characterized to date. [provided by RefSeq]

**Other Designations**

GTPase-activating protein Spa-1|p130 SPA-1|signal-induced proliferation-associated gene 1|signal-induced proliferation-associated protein 1

**Pathway**

- [Leukocyte transendothelial migration](#)

**Disease**

- [Abortion](#)
- [Breast cancer](#)
- [Breast Neoplasms](#)
- [Cardiovascular Diseases](#)
- [Diabetes Mellitus](#)
- [Edema](#)
- [Genetic Predisposition to Disease](#)
- [Hematologic Diseases](#)
- [Kidney Failure](#)
- [Lymphatic Metastasis](#)
- [Neoplasm Metastasis](#)
- [Occupational Diseases](#)
- [Uterine Cervical Neoplasms](#)