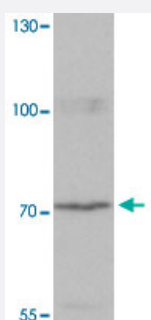


LZTS2 polyclonal antibody

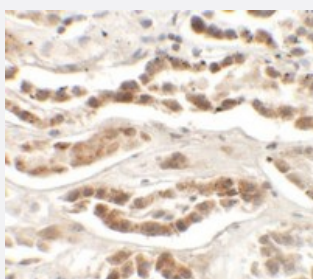
Catalog # PAB25777 Size 100 ug

Applications



Western Blot (Tissue lysate)

Western blot analysis of LZTS2 in human kidney tissue with LZTS2 polyclonal antibody (Cat # PAB25777) at 1 ug/mL.



Immunohistochemistry

Immunohistochemical analysis of LZTS2 in human kidney tissue with LZTS2 polyclonal antibody (Cat # PAB25777) at 2.5 ug/mL.

Specification

Product Description	Rabbit polyclonal antibody raised against synthetic peptide of LZTS2.
Immunogen	A synthetic peptide corresponding to 19 amino acids at N-terminus of human LZTS2.
Host	Rabbit
Reactivity	Human, Mouse
Specificity	LZTS2 antibody is predicted to not cross-react with other LZTS family members.
Form	Liquid
Purification	Peptide affinity purification

Concentration	1 mg/mL
Isotype	IgG
Recommend Usage	Western Blot (1 ug/mL) Immunohistochemistry (2.5 ug/mL) The optimal working dilution should be determined by the end user.
Storage Buffer	In PBS (0.02% sodium azide)
Storage Instruction	Store at 4°C for three months. For long term storage store at -20°C. Aliquot to avoid repeated freezing and thawing.
Note	This product contains sodium azide: a POISONOUS AND HAZARDOUS SUBSTANCE which should be handled by trained staff only.

Applications

- Western Blot (Tissue lysate)

Western blot analysis of LZTS2 in human kidney tissue with LZTS2 polyclonal antibody (Cat # PAB25777) at 1 ug/mL.

- Immunohistochemistry

Immunohistochemical analysis of LZTS2 in human kidney tissue with LZTS2 polyclonal antibody (Cat # PAB25777) at 2.5 ug/mL.

- Enzyme-linked Immunoabsorbent Assay

Gene Info — LZTS2

Entrez GeneID	84445
Protein Accession#	NP_115805
Gene Name	LZTS2
Gene Alias	KIAA1813, LAPSER1
Gene Description	leucine zipper, putative tumor suppressor 2
Omim ID	610454
Gene Ontology	Hyperlink
Gene Summary	O

Other Designations

OTTHUMP00000020289|OTTHUMP00000020290

Disease

- [Alzheimer Disease](#)
- [Genetic Predisposition to Disease](#)