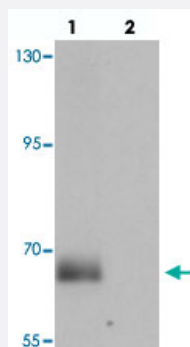


# SPATA18 polyclonal antibody

Catalog # PAB25772      Size 100 ug

## Applications



### Western Blot (Tissue lysate)

Western blot analysis of SPATA18 in rat lung tissue with SPATA18 polyclonal antibody (Cat # PAB25772) at 1 ug/mL in (lane 1) the absence and (lane 2) the presence of blocking peptide.

## Specification

<b>Product Description</b>	Chicken polyclonal antibody raised against synthetic peptide of SPATA18.
<b>Immunogen</b>	A synthetic peptide corresponding to 19 amino acids at N-terminus of human SPATA18.
<b>Host</b>	Chicken
<b>Reactivity</b>	Human, Mouse, Rat
<b>Specificity</b>	At least three isoforms of SPATA18 are known to exist; this antibody will detect the two longest isoforms. SPATA18 antibody is predicted to not cross-react with other SPATA family members.
<b>Form</b>	Liquid
<b>Purification</b>	Peptide affinity purification
<b>Concentration</b>	1 mg/mL
<b>Isotype</b>	IgY
<b>Recommend Usage</b>	Western Blot (1 ug/mL) The optimal working dilution should be determined by the end user.
<b>Storage Buffer</b>	In PBS (0.02% sodium azide)

**Storage Instruction**

Store at 4°C for three months. For long term storage store at -20°C.  
Aliquot to avoid repeated freezing and thawing.

**Note**

This product contains sodium azide: a POISONOUS AND HAZARDOUS SUBSTANCE which should be handled by trained staff only.

## Applications

- Western Blot (Tissue lysate)

Western blot analysis of SPATA18 in rat lung tissue with SPATA18 polyclonal antibody (Cat # PAB25772) at 1 ug/mL in (lane 1) the absence and (lane 2) the presence of blocking peptide.

- Enzyme-linked Immunoabsorbent Assay

## Gene Info — SPATA18

**Entrez GeneID**[132671](#)**Protein Accession#**[NP\\_660306](#)**Gene Name**

SPATA18

**Gene Alias**

FLJ32906

**Gene Description**

spermatogenesis associated 18 homolog (rat)

**Gene Ontology**[Hyperlink](#)**Other Designations**

spermatogenesis associated 18 homolog