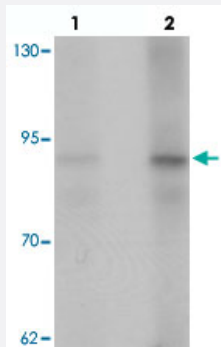


AFAP1 polyclonal antibody

Catalog # PAB25767 Size 100 ug

Applications



Western Blot (Cell lysate)

Western blot analysis of AFAP1 in HeLa cell lysate with AFAP1 polyclonal antibody (Cat # PAB25767) at (lane 1) 1 and (lane 2) 2 ug/mL.

Specification

Product Description	Rabbit polyclonal antibody raised against synthetic peptide of AFAP1.
Immunogen	A synthetic peptide corresponding to 18 amino acids at N-terminus of human AFAP1.
Host	Rabbit
Reactivity	Human, Mouse
Specificity	Monomer and homomultimer of AFAP1 are known to exist; AFAP1 antibody is predicted to not cross-react with other AFAP family members.
Form	Liquid
Purification	Peptide affinity purification
Concentration	1 mg/mL
Isotype	IgG
Recommend Usage	Western Blot (1-2 ug/mL) The optimal working dilution should be determined by the end user.
Storage Buffer	In PBS (0.02% sodium azide)

Storage Instruction

Store at 4°C for three months. For long term storage store at -20°C.
Aliquot to avoid repeated freezing and thawing.

Note

This product contains sodium azide: a POISONOUS AND HAZARDOUS SUBSTANCE which should be handled by trained staff only.

Applications

- Western Blot (Cell lysate)

Western blot analysis of AFAP1 in HeLa cell lysate with AFAP1 polyclonal antibody (Cat # PAB25767) at (lane 1) 1 and (lane 2) 2 ug/mL.

- Enzyme-linked Immunoabsorbent Assay

Gene Info — AFAP1

Entrez GeneID[60312](#)**Protein Accession#**[NP_940997](#)**Gene Name**

AFAP1

Gene Alias

AFAP, AFAP-110, FLJ56849

Gene Description

actin filament associated protein 1

Omim ID[608252](#)**Gene Ontology**[Hyperlink](#)**Gene Summary**

The protein encoded by this gene is a Src binding partner. It may represent a potential modulator of actin filament integrity in response to cellular signals, and may function as an adaptor protein by linking Src family members and/or other signaling proteins to actin filaments. Multiple transcript variants encoding different isoforms have been found for this gene. [provided by RefSeq]

Other Designations

OTTHUMP00000155170|actin filament-associated protein, 110 kDa