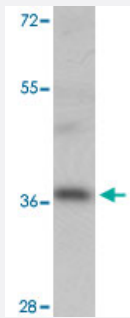


RASSF6 polyclonal antibody

Catalog # PAB25766 Size 100 ug

Applications



Western Blot (Cell lysate)

Western blot analysis of RASSF6 in 293 cell lysate with RASSF6 polyclonal antibody (Cat # PAB25766) at 1 ug/mL.

Specification

Product Description	Rabbit polyclonal antibody raised against synthetic peptide of RASSF6.
Immunogen	A synthetic peptide corresponding to 14 amino acids at internal region of human RASSF6.
Host	Rabbit
Reactivity	Human
Specificity	At least four isoforms of RASSF6 are known to exist. RASSF6 antibody is predicted to not cross-react with other RASSF family members.
Form	Liquid
Purification	Peptide affinity purification
Concentration	1 mg/mL
Isotype	IgG
Recommend Usage	Western Blot (1 ug/mL) The optimal working dilution should be determined by the end user.
Storage Buffer	In PBS (0.02% sodium azide)

Storage Instruction

Store at 4°C for three months. For long term storage store at -20°C.
Aliquot to avoid repeated freezing and thawing.

Note

This product contains sodium azide: a POISONOUS AND HAZARDOUS SUBSTANCE which should be handled by trained staff only.

Applications

- Western Blot (Cell lysate)

Western blot analysis of RASSF6 in 293 cell lysate with RASSF6 polyclonal antibody (Cat # PAB25766) at 1 ug/mL.

- Enzyme-linked Immunoabsorbent Assay

Gene Info — RASSF6

Entrez GeneID [166824](#)

Protein Accession# [NP_803876](#)

Gene Name RASSF6

Gene Alias DKFZp686K23225

Gene Description Ras association (RalGDS/AF-6) domain family member 6

Gene Ontology [Hyperlink](#)

Gene Summary RASSF6 is a member of the RAS association (RA) domain family of RAS effectors/tumor suppressors that mediate some of the growth inhibitory properties of RAS (see HRAS; MIM 190020) oncogenes (Eckfeld et al., 2004 [PubMed 15574778]).[supplied by OMIM]

Other Designations Ras association (RalGDS/AF-6) domain family 6|putative RAS binding protein

Disease

- [Cystic fibrosis](#)