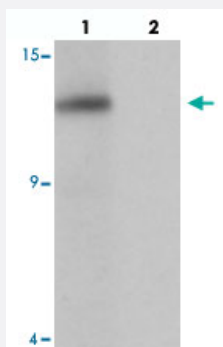


SDHAF2 polyclonal antibody

Catalog # PAB25763 Size 100 ug

Applications



Western Blot (Tissue lysate)

Western blot analysis of SDHAF2 in rat liver tissue with SDHAF2 polyclonal antibody (Cat # PAB25763) at 1 ug/mL in (lane 1) the absence and (lane 2) the presence of blocking peptide.

Specification

Product Description	Chicken polyclonal antibody raised against synthetic peptide of SDHAF2.
Immunogen	A synthetic peptide corresponding to 16 amino acids at N-terminus of human SDHAF2.
Host	Chicken
Reactivity	Human, Mouse, Rat
Specificity	SDHAF2 antibody is predicted to not cross-react with other SDHAF protein family members.
Form	Liquid
Purification	Peptide affinity purification
Concentration	1 mg/mL
Isotype	IgY
Recommend Usage	Western Blot (1 ug/mL) The optimal working dilution should be determined by the end user.
Storage Buffer	In PBS (0.02% sodium azide)

Storage Instruction

Store at 4°C for three months. For long term storage store at -20°C.
Aliquot to avoid repeated freezing and thawing.

Note

This product contains sodium azide: a POISONOUS AND HAZARDOUS SUBSTANCE which should be handled by trained staff only.

Applications

- Western Blot (Tissue lysate)

Western blot analysis of SDHAF2 in rat liver tissue with SDHAF2 polyclonal antibody (Cat # PAB25763) at 1 ug/mL in (lane 1) the absence and (lane 2) the presence of blocking peptide.

- Enzyme-linked Immunoabsorbent Assay

Gene Info — SDHAF2

Entrez GeneID[54949](#)**Protein Accession#**[NP_060311](#)**Gene Name**

SDHAF2

Gene Alias

C11orf79, PGL2, SDH5

Gene Description

succinate dehydrogenase complex assembly factor 2

Gene Ontology[Hyperlink](#)**Gene Summary**

The SDHAF2 gene encodes a protein necessary for the flavination of the succinate dehydrogenase complex subunit SDHA (MIM 600857) and thus for SDH activity (Hao et al., 2009 [PubMed 19628817]).[supplied by OMIM]

Other Designations

SDH assembly factor 2; hSDH5; succinate dehydrogenase assembly factor 2[mitochondrial; succinate dehydrogenase subunit 5[mitochondrial]

Disease

- [Adrenal Gland Neoplasms](#)
- [Head and Neck Neoplasms](#)
- [Paranganglioma](#)

- [Pheochromocytoma](#)