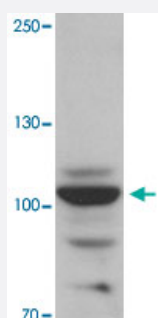


RAPGEF3 polyclonal antibody

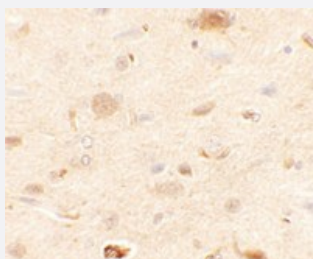
Catalog # PAB25756 Size 100 ug

Applications



Western Blot (Tissue lysate)

Western blot analysis of RAPGEF3 in rat skeletal muscle tissue with RAPGEF3 polyclonal antibody (Cat # PAB25756) at 1 ug/mL.



Immunohistochemistry

Immunohistochemical analysis of RAPGEF3 in rat brain tissue with RAPGEF3 polyclonal antibody (Cat # PAB25756) at 2.5 ug/mL.

Specification

Product Description	Rabbit polyclonal antibody raised against synthetic peptide of RAPGEF3.
Immunogen	A synthetic peptide corresponding to 18 amino acids at N-terminus of human RAPGEF3.
Host	Rabbit
Reactivity	Human, Mouse, Rat
Specificity	At least two isoforms of EPAC1 are known to exist; this antibody will detect both isoforms. EPAC1 antibody is predicted to not cross-react with EPAC2.
Form	Liquid

Purification	Peptide affinity purification
Concentration	1 mg/mL
Isotype	IgG
Recommend Usage	Western Blot (1 ug/mL) Immunohistochemistry (2.5 ug/mL) The optimal working dilution should be determined by the end user.
Storage Buffer	In PBS (0.02% sodium azide)
Storage Instruction	Store at 4°C for three months. For long term storage store at -20°C. Aliquot to avoid repeated freezing and thawing.
Note	This product contains sodium azide: a POISONOUS AND HAZARDOUS SUBSTANCE which should be handled by trained staff only.

Applications

- Western Blot (Tissue lysate)

Western blot analysis of RAPGEF3 in rat skeletal muscle tissue with RAPGEF3 polyclonal antibody (Cat # PAB25756) at 1 ug/mL.

- Immunohistochemistry

Immunohistochemical analysis of RAPGEF3 in rat brain tissue with RAPGEF3 polyclonal antibody (Cat # PAB25756) at 2.5 ug/mL.

- Enzyme-linked Immunoabsorbent Assay

Gene Info — RAPGEF3

Entrez GeneID	10411
Protein Accession#	NP_659099
Gene Name	RAPGEF3
Gene Alias	CAMP-GEFI, EPAC, EPAC1, HSU79275, MGC21410, bcm910
Gene Description	Rap guanine nucleotide exchange factor (GEF) 3
Omim ID	606057
Gene Ontology	Hyperlink

Other Designations

9330170P05Rik|Rap guanine nucleotide exchange factor 3|Rap1 guanine-nucleotide-exchange factor directly activated by cAMP|exchange protein directly activated by cAMP 1

Pathway

- [Leukocyte transendothelial migration](#)
- [Long-term potentiation](#)

Disease

- [Asthma](#)
- [Tobacco Use Disorder](#)