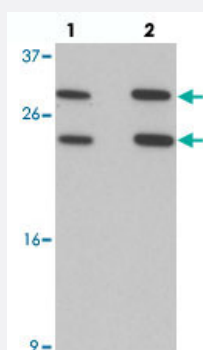


# MS4A6A polyclonal antibody

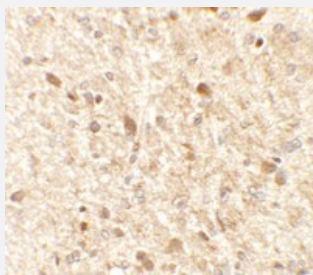
Catalog # PAB25749      Size 100 ug

## Applications



### Western Blot (Cell lysate)

Western blot analysis of MS4A6A in 293 cell lysate with MS4A6A polyclonal antibody (Cat # PAB25749) at (lane 1) 1 and (lane 2) 2 ug/mL.



### Immunohistochemistry

Immunohistochemical analysis of MS4A6A in rat brain tissue with MS4A6A polyclonal antibody (Cat # PAB25749) at 2.5 ug/mL.

## Specification

<b>Product Description</b>	Rabbit polyclonal antibody raised against synthetic peptide of MS4A6A.
<b>Immunogen</b>	A synthetic peptide corresponding to 19 amino acids at N-terminus of human MS4A6A.
<b>Host</b>	Rabbit
<b>Reactivity</b>	Human, Mouse, Rat
<b>Specificity</b>	At least three isoforms of MS4A6A are known to exist; this antibody will detect the two longer isoforms. MS4A6A antibody is predicted to not cross-react with MS4A family members.
<b>Form</b>	Liquid

Purification	Peptide affinity purification
Concentration	1 mg/mL
Isotype	IgG
Recommend Usage	Western Blot (1-2 ug/mL) Immunohistochemistry (2.5 ug/mL) The optimal working dilution should be determined by the end user.
Storage Buffer	In PBS (0.02% sodium azide)
Storage Instruction	Store at 4°C for three months. For long term storage store at -20°C. Aliquot to avoid repeated freezing and thawing.
Note	This product contains sodium azide: a POISONOUS AND HAZARDOUS SUBSTANCE which should be handled by trained staff only.

## Applications

- Western Blot (Cell lysate)

Western blot analysis of MS4A6A in 293 cell lysate with MS4A6A polyclonal antibody (Cat # PAB25749) at (lane 1) 1 and (lane 2) 2 ug/mL.

- Immunohistochemistry

Immunohistochemical analysis of MS4A6A in rat brain tissue with MS4A6A polyclonal antibody (Cat # PAB25749) at 2.5 ug/mL.

- Enzyme-linked Immunoabsorbent Assay

## Gene Info — MS4A6A

Entrez GeneID	<a href="#">64231</a>
Protein Accession#	<a href="#">NP_071744</a>
Gene Name	MS4A6A
Gene Alias	4SPAN3, 4SPAN3.2, CD20L3, CDA01, MGC131944, MGC22650, MS4A6, MST090, MSTP090
Gene Description	membrane-spanning 4-domains, subfamily A, member 6A
Omim ID	<a href="#">606548</a>
Gene Ontology	<a href="#">Hyperlink</a>

**Gene Summary**

This gene encodes a member of the membrane-spanning 4A gene family. Members of this nascent protein family are characterized by common structural features and similar intron/exon splice boundaries and display unique expression patterns among hematopoietic cells and nonlymphoid tissues. The gene encoding this protein is localized to 11q12.1, among a cluster of family members. Alternative splicing of this gene results in several transcript variants. [provided by RefSeq]

**Other Designations**

CD20-like precursor|HAIRB-iso|MS4A6A-polymorph|four-span transmembrane protein 3.1|four-span transmembrane protein 3.2|membrane-spanning 4-domains, subfamily A, member 6A, isoform 2

**Disease**

- [Adenocarcinoma](#)
- [Esophageal Neoplasms](#)