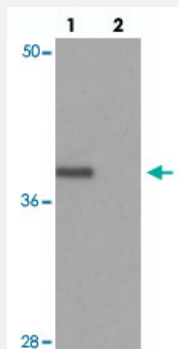


# PRICKLE4 polyclonal antibody

Catalog # PAB25747

Size 100 ug

## Applications



### Western Blot (Cell lysate)

Western blot analysis of PRICKLE4 in A-549 cell lysate with PRICKLE4 polyclonal antibody (Cat # PAB25747) at 0.25 ug/ml in the (lane 1) absence and (lane 2) presence of blocking peptide.



### Immunocytochemistry

Immunocytochemical analysis of PRICKLE4 in A-549 cell lysate with PRICKLE4 polyclonal antibody (Cat # PAB25747) at 5 ug/mL.

## Specification

<b>Product Description</b>	Rabbit polyclonal antibody raised against synthetic peptide of PRICKLE4.
<b>Immunogen</b>	A synthetic peptide corresponding to 18 amino acids at N-terminus of human PRICKLE4.
<b>Host</b>	Rabbit
<b>Reactivity</b>	Human
<b>Specificity</b>	Two isoforms of PRICKLE4 are known to exist. PRICKLE4 antibody is predicted to not cross-react with other PRICKLE protein family members.
<b>Form</b>	Liquid

Purification	Peptide affinity purification
Concentration	1 mg/mL
Isotype	IgG
Recommend Usage	Western Blot (0.25 ug/mL) Immunocytochemistry (5 ug/mL) The optimal working dilution should be determined by the end user.
Storage Buffer	In PBS (0.02% sodium azide)
Storage Instruction	Store at 4°C for three months. For long term storage store at -20°C. Aliquot to avoid repeated freezing and thawing.
Note	This product contains sodium azide: a POISONOUS AND HAZARDOUS SUBSTANCE which should be handled by trained staff only.

## Applications

- Western Blot (Cell lysate)

Western blot analysis of PRICKLE4 in A-549 cell lysate with PRICKLE4 polyclonal antibody (Cat # PAB25747) at 0.25 ug/ml in the (lane 1) absence and (lane 2) presence of blocking peptide.

- Immunocytochemistry

Immunocytochemical analysis of PRICKLE4 in A-549 cell lysate with PRICKLE4 polyclonal antibody (Cat # PAB25747) at 5 ug/mL.

- Enzyme-linked Immunoabsorbent Assay

## Gene Info — PRICKLE4

Entrez GeneID	<a href="#">29964</a>
Protein Accession#	<a href="#">NP_037529</a>
Gene Name	PRICKLE4
Gene Alias	C6orf49, MGC120398, OBTP, OEBT
Gene Description	prickle homolog 4 (Drosophila)
Omim ID	<a href="#">611389</a>
Gene Ontology	<a href="#">Hyperlink</a>

**Gene Summary**

C6ORF49 is a member of the LIM domain protein family (Teufel et al., 2005 [PubMed 15702247])  
.[supplied by OMIM]

**Other Designations**

OTTHUMP00000174832|over-expressed breast tumor protein