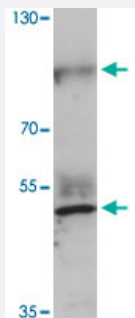


PRICKLE2 polyclonal antibody

Catalog # PAB25746

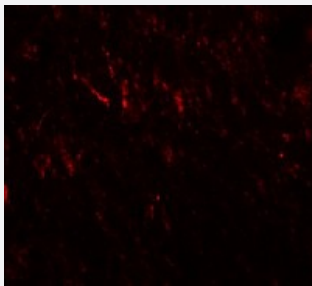
Size 100 ug

Applications



Western Blot (Cell lysate)

Western blot analysis of PRICKLE2 in A-20 cell lysate with PRICKLE2 polyclonal antibody (Cat # PAB25746) at 1 ug/mL.



Immunofluorescence

Immunofluorescence analysis of PRICKLE2 in rat brain with PRICKLE2 polyclonal antibody (Cat # PAB25746) at 20 ug/mL.

Specification

Product Description	Rabbit polyclonal antibody raised against synthetic peptide of PRICKLE2.
Immunogen	A synthetic peptide corresponding to 15 amino acids at internal region of human PRICKLE2.
Host	Rabbit
Reactivity	Human, Mouse, Rat
Specificity	Two isoforms of PRICKLE2 are known to exist. PRICKLE2 antibody is predicted to not cross-react with other PRICKLE protein family members.
Form	Liquid

Purification	Peptide affinity purification
Concentration	1 mg/mL
Isotype	IgG
Recommend Usage	Western Blot (1 ug/mL) Immunofluorescence (20 ug/mL) The optimal working dilution should be determined by the end user.
Storage Buffer	In PBS (0.02% sodium azide)
Storage Instruction	Store at 4°C for three months. For long term storage store at -20°C. Aliquot to avoid repeated freezing and thawing.
Note	This product contains sodium azide: a POISONOUS AND HAZARDOUS SUBSTANCE which should be handled by trained staff only.

Applications

- Western Blot (Cell lysate)

Western blot analysis of PRICKLE2 in A-20 cell lysate with PRICKLE2 polyclonal antibody (Cat # PAB25746) at 1 ug/mL.

- Immunofluorescence

Immunofluorescence analysis of PRICKLE2 in rat brain with PRICKLE2 polyclonal antibody (Cat # PAB25746) at 20 ug/mL.

- Enzyme-linked Immunoabsorbent Assay

Gene Info — PRICKLE2

Entrez GeneID	166336
Protein Accession#	NP_942559
Gene Name	PRICKLE2
Gene Alias	DKFZp686D143, DKFZp686H1748, DKFZp686M031
Gene Description	prickle homolog 2 (Drosophila)
Omim ID	608501
Gene Ontology	Hyperlink
Other Designations	prickle-like 2

Pathway

- [Wnt signaling pathway](#)