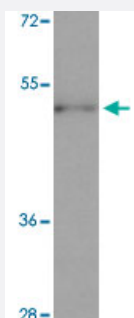


SPATA6 polyclonal antibody

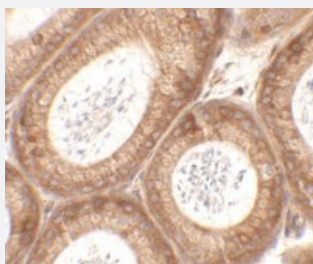
Catalog # PAB25743 Size 100 ug

Applications



Western Blot (Cell lysate)

Western blot analysis of SPATA6 in A-20 cell lysate with SPATA6 polyclonal antibody (Cat # PAB25743) at 1 ug/mL.



Immunohistochemistry

Immunohistochemical analysis of SPATA6 in mouse testis tissue with SPATA6 polyclonal antibody (Cat # PAB25743) at 2.5 ug/mL.

Specification

Product Description	Rabbit polyclonal antibody raised against synthetic peptide of SPATA6.
Immunogen	A synthetic peptide corresponding to 14 amino acids at C-terminus of human SPATA6.
Host	Rabbit
Reactivity	Human, Mouse, Rat
Specificity	At least three isoforms of SPATA6 are known to exist; this antibody will detect only the longest two isoforms. SPATA6 antibody is predicted to not cross-react with other SPATA protein family members.
Form	Liquid

Purification	Peptide affinity purification
Concentration	1 mg/mL
Isotype	IgG
Recommend Usage	Western Blot (1 ug/mL) Immunohistochemistry (2.5 ug/mL) The optimal working dilution should be determined by the end user.
Storage Buffer	In PBS (0.02% sodium azide)
Storage Instruction	Store at 4°C for three months. For long term storage store at -20°C. Aliquot to avoid repeated freezing and thawing.
Note	This product contains sodium azide: a POISONOUS AND HAZARDOUS SUBSTANCE which should be handled by trained staff only.

Applications

- Western Blot (Cell lysate)

Western blot analysis of SPATA6 in A-20 cell lysate with SPATA6 polyclonal antibody (Cat # PAB25743) at 1 ug/mL.

- Immunohistochemistry

Immunohistochemical analysis of SPATA6 in mouse testis tissue with SPATA6 polyclonal antibody (Cat # PAB25743) at 2.5 ug/mL.

- Enzyme-linked Immunoabsorbent Assay

Gene Info — SPATA6

Entrez GeneID	54558
Protein Accession#	NP_061946
Gene Name	SPATA6
Gene Alias	FLJ10007, SRF-1, SRF1
Gene Description	spermatogenesis associated 6
Gene Ontology	Hyperlink
Other Designations	OTTHUMP00000009461