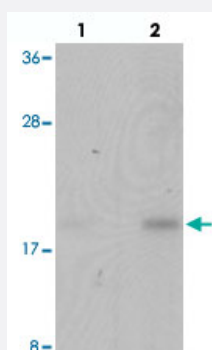


SPATA4 polyclonal antibody

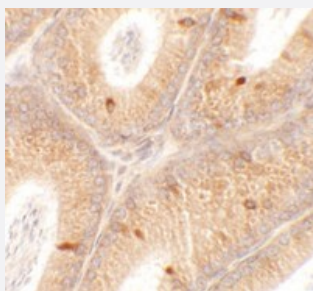
Catalog # PAB25742 Size 100 ug

Applications



Western Blot (Tissue lysate)

Western blot analysis of SPATA4 in mouse stomach tissue with SPATA4 polyclonal antibody (Cat # PAB25742) at (lane 1) 1 and (lane 2) 2 ug/mL.



Immunohistochemistry

Immunohistochemical analysis of SPATA4 in mouse testis tissue with SPATA4 polyclonal antibody (Cat # PAB25742) at 2.5 ug/mL.

Specification

Product Description	Rabbit polyclonal antibody raised against synthetic peptide of SPATA4.
Immunogen	A synthetic peptide corresponding to 18 amino acids at C-terminus of human SPATA4.
Host	Rabbit
Reactivity	Human, Mouse
Specificity	At least two isoforms of SPATA4 are known to exist; this antibody will detect both isoforms. SPATA4 antibody is predicted to not cross-react with SPATA protein family members.
Form	Liquid

Purification	Peptide affinity purification
Concentration	1 mg/mL
Isotype	IgG
Recommend Usage	Western Blot (1-2 ug/mL) Immunohistochemistry (2.5 ug/mL) The optimal working dilution should be determined by the end user.
Storage Buffer	In PBS (0.02% sodium azide)
Storage Instruction	Store at 4°C for three months. For long term storage store at -20°C. Aliquot to avoid repeated freezing and thawing.
Note	This product contains sodium azide: a POISONOUS AND HAZARDOUS SUBSTANCE which should be handled by trained staff only.

Applications

- Western Blot (Tissue lysate)

Western blot analysis of SPATA4 in mouse stomach tissue with SPATA4 polyclonal antibody (Cat # PAB25742) at (lane 1) 1 and (lane 2) 2 ug/mL.

- Immunohistochemistry

Immunohistochemical analysis of SPATA4 in mouse testis tissue with SPATA4 polyclonal antibody (Cat # PAB25742) at 2.5 ug/mL.

- Enzyme-linked Immunoabsorbent Assay

Gene Info — SPATA4

Entrez GeneID	132851
Protein Accession#	NP_653245
Gene Name	SPATA4
Gene Alias	MGC33432, SPEF1B, TSARG2
Gene Description	spermatogenesis associated 4
Omim ID	609879
Gene Ontology	Hyperlink

Other Designations

testis and spermatogenesis cell related protein 2

Disease

- [Tobacco Use Disorder](#)