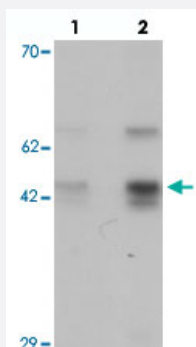


SLC35D3 polyclonal antibody

Catalog # PAB25739

Size 100 ug

Applications



Western Blot (Cell lysate)

Western blot analysis of SLC35D3 in HeLa cell lysate with SLC35D3 polyclonal antibody (Cat # PAB25739) at (lane 1) 1 and (lane 2) 2 ug/mL.



Immunocytochemistry

Immunocytochemical analysis of SLC35D3 in HeLa cell lysate with SLC35D3 polyclonal antibody (Cat # PAB25739) at 2.5 ug/mL.

Specification

Product Description	Rabbit polyclonal antibody raised against synthetic peptide of SLC35D3.
Immunogen	A synthetic peptide corresponding to 17 amino acids at C-terminus of human SLC35D3.
Host	Rabbit
Reactivity	Human, Mouse
Specificity	At least two isoforms of SLC35D3 are known to exist; this antibody will recognize both isoforms. SLC35D3 antibody is predicted to not cross-react with SLC35D1 or SLC35D2.
Form	Liquid

Purification	Peptide affinity purification
Concentration	1 mg/mL
Isotype	IgG
Recommend Usage	Western Blot (1-2 ug/mL) Immunocytochemistry (2.5 ug/mL) The optimal working dilution should be determined by the end user.
Storage Buffer	In PBS (0.02% sodium azide)
Storage Instruction	Store at 4°C for three months. For long term storage store at -20°C. Aliquot to avoid repeated freezing and thawing.
Note	This product contains sodium azide: a POISONOUS AND HAZARDOUS SUBSTANCE which should be handled by trained staff only.

Applications

- Western Blot (Cell lysate)

Western blot analysis of SLC35D3 in HeLa cell lysate with SLC35D3 polyclonal antibody (Cat # PAB25739) at (lane 1) 1 and (lane 2) 2 ug/mL.

- Immunocytochemistry

Immunocytochemical analysis of SLC35D3 in HeLa cell lysate with SLC35D3 polyclonal antibody (Cat # PAB25739) at 2.5 ug/mL.

- Enzyme-linked Immunoabsorbent Assay

Gene Info — SLC35D3

Entrez GeneID	340146
Protein Accession#	AAH87842
Gene Name	SLC35D3
Gene Alias	FRCL1, MGC102873, bA55K22.3
Gene Description	solute carrier family 35, member D3
Gene Ontology	Hyperlink
Gene Summary	O

Other Designationsfrc, fringe-like 1
