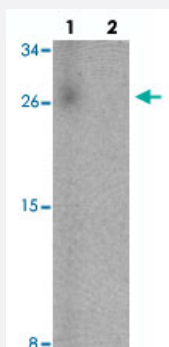


SPINK7 polyclonal antibody

Catalog # PAB25733

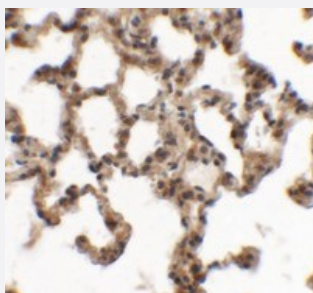
Size 100 ug

Applications



Western Blot (Tissue lysate)

Western blot analysis of SPINK7 in human lung tissue with SPINK7 polyclonal antibody (Cat # PAB25733) at 1 ug/mL in (lane 1) the absence and (lane 2) the presence of blocking peptide.



Immunohistochemistry

Immunohistochemical analysis of SPINK7 in rat lung tissue with SPINK7 polyclonal antibody (Cat # PAB25733) at 5 ug/mL.

Specification

| | |
|----------------------------|--|
| Product Description | Chicken polyclonal antibody raised against synthetic peptide of SPINK7. |
| Immunogen | A synthetic peptide corresponding to 16 amino acids at C-terminus of human SPINK7. |
| Host | Chicken |
| Reactivity | Human, Mouse, Rat |
| Specificity | ECRG2 antibody is predicted to not cross-react with other ECRG family members. |
| Form | Liquid |
| Purification | Peptide affinity purification |

| | |
|---------------------|--|
| Concentration | 1 mg/mL |
| Isotype | IgY |
| Recommend Usage | Western Blot (1 ug/mL) Immunohistochemistry (5 ug/mL) The optimal working dilution should be determined by the end user. |
| Storage Buffer | In PBS (0.02% sodium azide) |
| Storage Instruction | Store at 4°C for three months. For long term storage store at -20°C. Aliquot to avoid repeated freezing and thawing. |
| Note | This product contains sodium azide: a POISONOUS AND HAZARDOUS SUBSTANCE which should be handled by trained staff only. |

Applications

- Western Blot (Tissue lysate)

Western blot analysis of SPINK7 in human lung tissue with SPINK7 polyclonal antibody (Cat # PAB25733) at 1 ug/mL in (lane 1) the absence and (lane 2) the presence of blocking peptide.

- Immunohistochemistry

Immunohistochemical analysis of SPINK7 in rat lung tissue with SPINK7 polyclonal antibody (Cat # PAB25733) at 5 ug/mL.

- Enzyme-linked Immunoabsorbent Assay

Gene Info — SPINK7

| | |
|--------------------|---|
| Entrez GeneID | 84651 |
| Protein Accession# | AAI09386 |
| Gene Name | SPINK7 |
| Gene Alias | ECG2, ECRG2, MGC133105, MGC133106 |
| Gene Description | serine peptidase inhibitor, Kazal type 7 (putative) |
| Gene Ontology | Hyperlink |
| Gene Summary | O |
| Other Designations | esophagus cancer related gene 2 esophagus cancer-related gene-2 |

Disease

- [Adenocarcinoma](#)
- [Carcinoma](#)
- [Esophageal Neoplasms](#)
- [Genetic Predisposition to Disease](#)
- [Pancreatic cancer](#)
- [Pancreatic Neoplasms](#)
- [Pancreatitis](#)