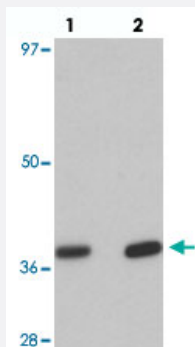


# EI24 polyclonal antibody

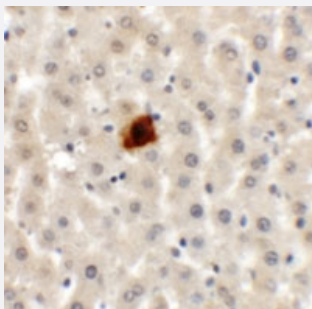
Catalog # PAB25726      Size 100 ug

## Applications



### Western Blot (Tissue lysate)

Western blot analysis of EI24 in rat liver tissue with EI24 polyclonal antibody (Cat # PAB25726) at (lane 1) 1 and (lane 2) 2 ug/mL.



### Immunohistochemistry

Immunohistochemical analysis of EI24 in rat liver tissue with EI24 polyclonal antibody (Cat # PAB25726) at 5 ug/mL.

## Specification

<b>Product Description</b>	Rabbit polyclonal antibody raised against synthetic peptide of EI24.
<b>Immunogen</b>	A synthetic peptide corresponding to 19 amino acids at C-terminus of human EI24.
<b>Host</b>	Rabbit
<b>Reactivity</b>	Human, Mouse, Rat
<b>Specificity</b>	At least two isoforms of EI24 are known to exist; this antibody will only detect the larger isoform.
<b>Form</b>	Liquid
<b>Purification</b>	Peptide affinity purification

Concentration	1 mg/mL
Isotype	IgG
Recommend Usage	Western Blot (1-2 ug/mL) Immunohistochemistry (5 ug/mL) The optimal working dilution should be determined by the end user.
Storage Buffer	In PBS (0.02% sodium azide)
Storage Instruction	Store at 4°C for three months. For long term storage store at -20°C. Aliquot to avoid repeated freezing and thawing.
Note	This product contains sodium azide: a POISONOUS AND HAZARDOUS SUBSTANCE which should be handled by trained staff only.

## Applications

- Western Blot (Tissue lysate)

Western blot analysis of EI24 in rat liver tissue with EI24 polyclonal antibody (Cat # PAB25726) at (lane 1) 1 and (lane 2) 2 ug/mL.

- Immunohistochemistry

Immunohistochemical analysis of EI24 in rat liver tissue with EI24 polyclonal antibody (Cat # PAB25726) at 5 ug/mL.

- Enzyme-linked Immunoabsorbent Assay

## Gene Info — EI24

Entrez GeneID	<a href="#">9538</a>
Protein Accession#	<a href="#">NP_004870</a>
Gene Name	EI24
Gene Alias	PIG8, TP53I8
Gene Description	etoposide induced 2.4 mRNA
Omim ID	<a href="#">605170</a>
Gene Ontology	<a href="#">Hyperlink</a>

**Gene Summary**

This gene has higher expression in p53-expressing cells than in control cells and is an immediate-early induction target of p53-mediated apoptosis. The protein encoded by this gene contains six putative transmembrane domains and may suppress cell growth by inducing apoptotic cell death through the caspase 9 and mitochondrial pathways. This gene is located on human chromosome 11q24, a region frequently altered in cancers. Alternative splicing results in two transcript variants encoding different isoforms. [provided by RefSeq]

**Other Designations**

etoposide induced 2.4|tumor protein p53 inducible protein 8

**Pathway**

- [p53 signaling pathway](#)