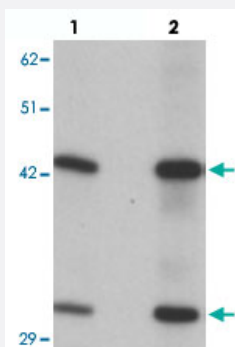


SEC62 polyclonal antibody

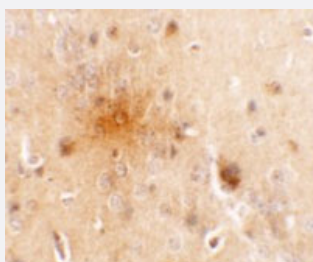
Catalog # PAB25722 Size 100 ug

Applications



Western Blot (Tissue lysate)

Western blot analysis of SEC62 in rat brain tissue with SEC62 polyclonal antibody (Cat # PAB25722) at (lane 1) 0.5 and (lane 2) 1 ug/mL.



Immunohistochemistry

Immunohistochemical analysis of SEC62 in mouse brain tissue with SEC62 polyclonal antibody (Cat # PAB25722) at 5 ug/mL.

Specification

Product Description	Rabbit polyclonal antibody raised against synthetic peptide of SEC62.
Immunogen	A synthetic peptide corresponding to 18 amino acids at C-terminus of human SEC62.
Host	Rabbit
Reactivity	Human, Mouse, Rat
Specificity	SEC62 antibody is predicted to not cross-react with other SEC proteins. Multiple isoforms of SEC62 are known to exist.
Form	Liquid

Purification	Peptide affinity purification
Concentration	1 mg/mL
Isotype	IgG
Recommend Usage	Western Blot (0.5-1 ug/mL) Immunohistochemistry (5 ug/mL) The optimal working dilution should be determined by the end user.
Storage Buffer	In PBS (0.02% sodium azide)
Storage Instruction	Store at 4°C for three months. For long term storage store at -20°C. Aliquot to avoid repeated freezing and thawing.
Note	This product contains sodium azide: a POISONOUS AND HAZARDOUS SUBSTANCE which should be handled by trained staff only.

Applications

- Western Blot (Tissue lysate)

Western blot analysis of SEC62 in rat brain tissue with SEC62 polyclonal antibody (Cat # PAB25722) at (lane 1) 0.5 and (lane 2) 1 ug/mL.

- Immunohistochemistry

Immunohistochemical analysis of SEC62 in mouse brain tissue with SEC62 polyclonal antibody (Cat # PAB25722) at 5 ug/mL.

- Enzyme-linked Immunoabsorbent Assay

Gene Info — SEC62

Entrez GeneID	7095
Protein Accession#	NP_003253
Gene Name	SEC62
Gene Alias	Dtrp1, FLJ32803, HTP1, TLOC1, TP-1
Gene Description	SEC62 homolog (S. cerevisiae)
Omim ID	602173
Gene Ontology	Hyperlink

Gene Summary

The Sec61 complex is the central component of the protein translocation apparatus of the endoplasmic reticulum (ER) membrane. The protein encoded by this gene and SEC63 protein are found to be associated with ribosome-free SEC61 complex. It is speculated that Sec61-Sec62-Sec63 may perform post-translational protein translocation into the ER. The Sec61-Sec62-Sec63 complex might also perform the backward transport of ER proteins that are subject to the ubiquitin-proteasome-dependent degradation pathway. The encoded protein is an integral membrane protein located in the rough ER. [provided by RefSeq]

Other Designations

membrane protein SEC62, *S.cerevisiae*, homolog of translocation protein 1 | translocation protein SEC62