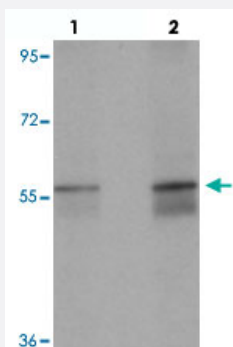


NETO1 polyclonal antibody

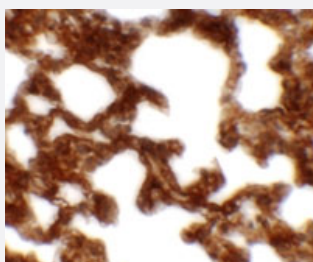
Catalog # PAB25721 Size 100 ug

Applications



Western Blot (Tissue lysate)

Western blot analysis of NETO1 in human lung tissue with NETO1 polyclonal antibody (Cat # PAB25721) at (lane 1) 1 and (lane 2) 2 ug/mL.



Immunohistochemistry

Immunohistochemical analysis of NETO1 in rat lung tissue with NETO1 polyclonal antibody (Cat # PAB25721) at 2.5 ug/mL.

Specification

Product Description	Rabbit polyclonal antibody raised against synthetic peptide of NETO1.
Immunogen	A synthetic peptide corresponding to 18 amino acids at C-terminus of human NETO1.
Host	Rabbit
Reactivity	Human, Mouse, Rat
Specificity	NETO1 antibody is predicted to not cross-react with other NETO protein family members.
Form	Liquid
Purification	Peptide affinity purification

Concentration	1 mg/mL
Isotype	IgG
Recommend Usage	Western Blot (1-2 ug/mL) Immunohistochemistry (2.5 ug/mL) The optimal working dilution should be determined by the end user.
Storage Buffer	In PBS (0.02% sodium azide)
Storage Instruction	Store at 4°C for three months. For long term storage store at -20°C. Aliquot to avoid repeated freezing and thawing.
Note	This product contains sodium azide: a POISONOUS AND HAZARDOUS SUBSTANCE which should be handled by trained staff only.

Applications

- Western Blot (Tissue lysate)

Western blot analysis of NETO1 in human lung tissue with NETO1 polyclonal antibody (Cat # PAB25721) at (lane 1) 1 and (lane 2) 2 ug/mL.

- Immunohistochemistry

Immunohistochemical analysis of NETO1 in rat lung tissue with NETO1 polyclonal antibody (Cat # PAB25721) at 2.5 ug/mL.

- Enzyme-linked Immunoabsorbent Assay

Gene Info — NETO1

Entrez GeneID	81832
Protein Accession#	NP_694821
Gene Name	NETO1
Gene Alias	BCTL1, BTCL1
Gene Description	neuropilin (NRP) and tolloid (TLL)-like 1
Omim ID	607973
Gene Ontology	Hyperlink

Gene Summary

This gene encodes a predicted transmembrane protein containing two extracellular CUB domains followed by a low-density lipoprotein class A (LDLa) domain. It also has an intracellular FXNPX Y-like motif, which has been shown in other proteins to be essential for the internalization of clathrin coated pits during endocytosis. Alternatively spliced transcript variants encoding distinct proteins have been described. [provided by RefSeq]

Other Designations

OTTHUMP00000163732|neuropilin- and tolloid-like protein 1

Disease

- [Cardiovascular Diseases](#)
- [Diabetes Mellitus](#)
- [Edema](#)