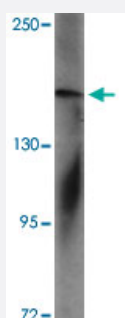


UHRF1BP1L polyclonal antibody

Catalog # PAB25719

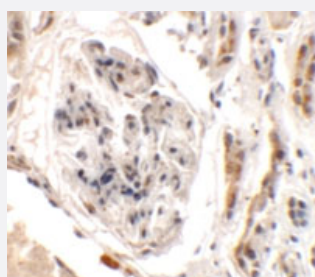
Size 100 ug

Applications



Western Blot (Tissue lysate)

Western blot analysis of UHRF1BP1L in mouse brain tissue with UHRF1BP1L polyclonal antibody (Cat # PAB25719) at 1 ug/mL.



Immunohistochemistry

Immunohistochemical analysis of UHRF1BP1L in human kidney tissue with UHRF1BP1L polyclonal antibody (Cat # PAB25719) at 2.5 ug/mL.

Specification

Product Description	Rabbit polyclonal antibody raised against synthetic peptide of UHRF1BP1L.
Immunogen	A synthetic peptide corresponding to 17 amino acids at internal region of human UHRF1BP1L.
Host	Rabbit
Reactivity	Human, Mouse
Specificity	At least two isoforms of UHRF1BP1L are known to exist; this antibody will recognize both isoforms. UHRF1BP1L antibody is predicted to not cross-react with UHRF1BP1.
Form	Liquid

Purification	Peptide affinity purification
Concentration	1 mg/mL
Isotype	IgG
Recommend Usage	Western Blot (1 ug/mL) Immunohistochemistry (2.5 ug/mL) The optimal working dilution should be determined by the end user.
Storage Buffer	In PBS (0.02% sodium azide)
Storage Instruction	Store at 4°C for three months. For long term storage store at -20°C. Aliquot to avoid repeated freezing and thawing.
Note	This product contains sodium azide: a POISONOUS AND HAZARDOUS SUBSTANCE which should be handled by trained staff only.

Applications

- Western Blot (Tissue lysate)

Western blot analysis of UHRF1BP1L in mouse brain tissue with UHRF1BP1L polyclonal antibody (Cat # PAB25719) at 1 ug/mL.

- Immunohistochemistry

Immunohistochemical analysis of UHRF1BP1L in human kidney tissue with UHRF1BP1L polyclonal antibody (Cat # PAB25719) at 2.5 ug/mL.

- Enzyme-linked Immunoabsorbent Assay

Gene Info — UHRF1BP1L

Entrez GeneID	23074
Protein Accession#	NP_055869
Gene Name	UHRF1BP1L
Gene Alias	KIAA0701
Gene Description	UHRF1 binding protein 1-like
Gene Ontology	Hyperlink
Other Designations	UHRF1 (ICBP90) binding protein 1-like