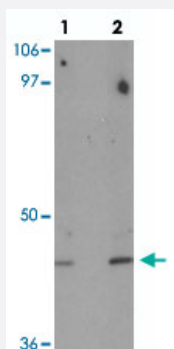


# DBX1 polyclonal antibody

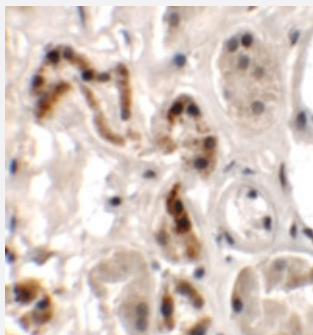
Catalog # PAB25717      Size 100 ug

## Applications



### Western Blot (Tissue lysate)

Western blot analysis of DBX1 in mouse kidney tissue with DBX1 polyclonal antibody (Cat # PAB25717) at (lane 1) 1 and (lane 2) 2 ug/mL.



### Immunohistochemistry

Immunohistochemical analysis of DBX1 in human kidney tissue with DBX1 polyclonal antibody (Cat # PAB25717) at 2.5 ug/mL.

## Specification

<b>Product Description</b>	Rabbit polyclonal antibody raised against synthetic peptide of DBX1.
<b>Immunogen</b>	A synthetic peptide corresponding to 15 amino acids at internal region of human DBX1.
<b>Host</b>	Rabbit
<b>Reactivity</b>	Human, Mouse, Rat
<b>Specificity</b>	BX1 antibody is predicted to not cross-react with other DBX protein family members.
<b>Form</b>	Liquid

Purification	Peptide affinity purification
Concentration	1 mg/mL
Isotype	IgG
Recommend Usage	Western Blot (1-2 ug/mL) Immunohistochemistry (2.5 ug/mL) The optimal working dilution should be determined by the end user.
Storage Buffer	In PBS (0.02% sodium azide)
Storage Instruction	Store at 4°C for three months. For long term storage store at -20°C. Aliquot to avoid repeated freezing and thawing.
Note	This product contains sodium azide: a POISONOUS AND HAZARDOUS SUBSTANCE which should be handled by trained staff only.

## Applications

- Western Blot (Tissue lysate)

Western blot analysis of DBX1 in mouse kidney tissue with DBX1 polyclonal antibody (Cat # PAB25717) at (lane 1) 1 and (lane 2) 2 ug/mL.

- Immunohistochemistry

Immunohistochemical analysis of DBX1 in human kidney tissue with DBX1 polyclonal antibody (Cat # PAB25717) at 2.5 ug/mL.

- Enzyme-linked Immunoabsorbent Assay

## Gene Info — DBX1

Entrez GeneID	<a href="#">120237</a>
Protein Accession#	<a href="#">NP_001025036</a>
Gene Name	DBX1
Gene Alias	-
Gene Description	developing brain homeobox 1
Gene Ontology	<a href="#">Hyperlink</a>
Other Designations	-