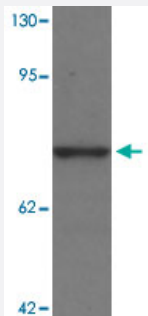


PALM3 polyclonal antibody

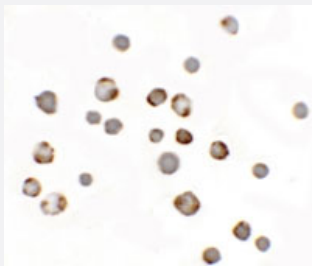
Catalog # PAB25715 Size 100 ug

Applications



Western Blot (Cell lysate)

Western blot analysis of PALM3 in MCF-7 cell lysate with PALM3 polyclonal antibody (Cat # PAB25715) at 1 ug/mL.



Immunocytochemistry

Immunocytochemical analysis of PALM3 in MCF-7 cell lysate with PALM3 polyclonal antibody (Cat # PAB25715) at 5 ug/mL.

Specification

Product Description	Rabbit polyclonal antibody raised against synthetic peptide of PALM3.
Immunogen	A synthetic peptide corresponding to 19 amino acids at N-terminus of human PALM3.
Host	Rabbit
Reactivity	Human
Specificity	At least two isoforms of Paralemmin3 are known to exist; this antibody will only detect the longer isoform.
Form	Liquid

Purification	Peptide affinity purification
Concentration	1 mg/mL
Isotype	IgG
Recommend Usage	Western Blot (1 ug/mL) Immunocytochemistry (5 ug/mL) The optimal working dilution should be determined by the end user.
Storage Buffer	In PBS (0.02% sodium azide)
Storage Instruction	Store at 4°C for three months. For long term storage store at -20°C. Aliquot to avoid repeated freezing and thawing.
Note	This product contains sodium azide: a POISONOUS AND HAZARDOUS SUBSTANCE which should be handled by trained staff only.

Applications

- Western Blot (Cell lysate)

Western blot analysis of PALM3 in MCF-7 cell lysate with PALM3 polyclonal antibody (Cat # PAB25715) at 1 ug/mL.

- Immunocytochemistry

Immunocytochemical analysis of PALM3 in MCF-7 cell lysate with PALM3 polyclonal antibody (Cat # PAB25715) at 5 ug/mL.

- Enzyme-linked Immunoabsorbent Assay

Gene Info — PALM3

Entrez GeneID	342979
Protein Accession#	NP_001138500
Gene Name	PALM3
Gene Alias	-
Gene Description	Paralemmin-3
Gene Ontology	Hyperlink
Other Designations	-