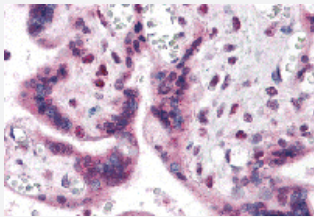


IRF2BP2 polyclonal antibody

Catalog # PAB25709 Size 100 ug

Applications



Immunohistochemistry

Immunohistochemical analysis of IRF2BP2 in human placenta tissue with IRF2BP2 polyclonal antibody (Cat # PAB25709) at 5 ug/mL.

Specification

Product Description	Rabbit polyclonal antibody raised against synthetic peptide of IRF2BP2.
Immunogen	A synthetic peptide corresponding to 17 amino acids at N-terminus of human IRF2BP2.
Host	Rabbit
Reactivity	Human
Specificity	At least two isoforms of IRF2BP2 are known to exist; this antibody will detect both.
Form	Liquid
Purification	Peptide affinity purification
Concentration	1 mg/mL
Isotype	IgG
Recommend Usage	Immunohistochemistry (5 ug/mL) The optimal working dilution should be determined by the end user.
Storage Buffer	In PBS (0.05% sodium azide)

Storage Instruction

Store at 4°C for three months. For long term storage store at -20°C.
Aliquot to avoid repeated freezing and thawing.

Note

This product contains sodium azide: a POISONOUS AND HAZARDOUS SUBSTANCE which should be handled by trained staff only.

Applications

- Immunohistochemistry

Immunohistochemical analysis of IRF2BP2 in human placenta tissue with IRF2BP2 polyclonal antibody (Cat # PAB25709) at 5 ug/mL.

- Enzyme-linked Immunoabsorbent Assay

Gene Info — IRF2BP2

Entrez GeneID[359948](#)**Protein Accession#**[NP_892017](#)**Gene Name**

IRF2BP2

Gene Alias

MGC72189

Gene Description

interferon regulatory factor 2 binding protein 2

Gene Ontology[Hyperlink](#)**Gene Summary**

This gene encodes an interferon regulatory factor-2 (IRF2) binding protein that interacts with the C-terminal transcriptional repression domain of IRF2. Alternative splicing results in multiple transcript variants encoding distinct isoforms. [provided by RefSeq]

Other Designations

OTTHUMP00000036087|OTTHUMP00000036088