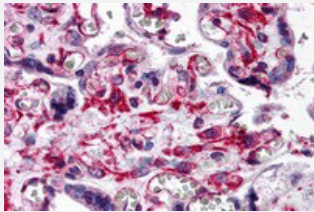


RUSC2 polyclonal antibody

Catalog # PAB25706 Size 100 ug

Applications



Immunohistochemistry

Immunohistochemical analysis of RUSC2 in human placenta tissue with RUSC2 polyclonal antibody (Cat # PAB25706) at 5 ug/mL.

Specification

Product Description	Rabbit polyclonal antibody raised against synthetic peptide of RUSC2.
Immunogen	A synthetic peptide corresponding to 15 amino acids at C-terminus of human RUSC2.
Host	Rabbit
Reactivity	Human
Specificity	At least three isoforms are known to exist; this antibody will only detect the longest isoform. This antibody is predicted to not cross-react with RUSC1.
Form	Liquid
Purification	Peptide affinity purification
Concentration	1 mg/mL
Isotype	IgG
Recommend Usage	Immunohistochemistry (5 ug/mL) The optimal working dilution should be determined by the end user.
Storage Buffer	In PBS (0.05% sodium azide)

Storage Instruction

Store at 4°C for three months. For long term storage store at -20°C.
Aliquot to avoid repeated freezing and thawing.

Note

This product contains sodium azide: a POISONOUS AND HAZARDOUS SUBSTANCE which should be handled by trained staff only.

Applications

- Immunohistochemistry

Immunohistochemical analysis of RUSC2 in human placenta tissue with RUSC2 polyclonal antibody (Cat # PAB25706) at 5 ug/mL.

- Enzyme-linked Immunoabsorbent Assay

Gene Info — RUSC2

Entrez GeneID[9853](#)**Protein Accession#**[NP_001098673](#)**Gene Name**

RUSC2

Gene Alias

Iporin, KIAA0375

Gene Description

RUN and SH3 domain containing 2

Omim ID[611053](#)**Gene Ontology**[Hyperlink](#)**Other Designations**

OTTHUMP00000021331

Disease

- [Disease Progression](#)

- [Disease Susceptibility](#)

- [HIV Infections](#)